

# IHS Information Hub Direct Connect



The only source of comprehensive log data.

Managing digital logs can be overwhelming because of the large and rapidly expanding volume of well data, resulting in data management issues that impact your ability to grow your business.

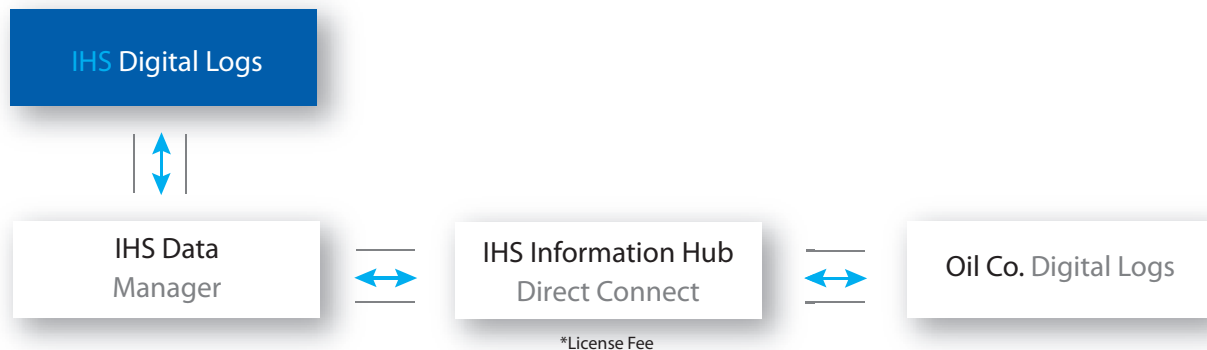
### Use One Source for Log Data

The IHS Information Hub Direct Connect is the only software that manages and integrates IHS digital log data with your company's proprietary digital log data. Using IHS Data Manager, the direct connection allows you to easily archive, index and make available your company's

proprietary data integrated with IHS data in a single window. This means that your data is protected, accessible, and users will only require one system to search all the data when starting new projects.

Gather and use proprietary and IHS data and save time evaluating business growth opportunities.

Integrate IHS and proprietary digital log data for viewing and download through the IHS Information Hub Direct Connect.

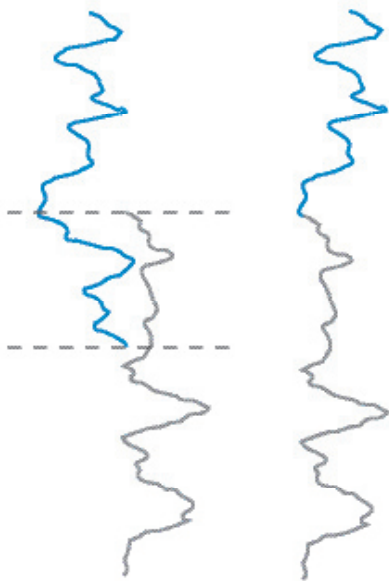


### Merging Curves

Proprietary curves may not necessarily cover an entire zone of interest. Direct Connect allows you to merge your proprietary curves with curves accessed through the comprehensive data offered by IHS.

- Merge by author – Direct Connect can look at any number of authors because it can view proprietary datasets as well.
- Trimming – control how curves merge when there are overlaps. Trim at the shallowest depth or trim deeper.
- Resample depth increments – choose the increment for all curve data to be resampled.

#### Merge by Author



Merge curves from multiple authors to create one curve.

### Curve Count

IHS has more curves than any other company can offer.



View curves from multiple sources.

### Digitizing

If IHS does not have the digits, we can create them for you from your hardcopy logs. Archive your proprietary data, integrate it with public data and then search and download both in a single window.

### Notes

---

---

---

---

---

---

---



For more information

Sales & Training 403.770.4646

[www.ihs.com/energy](http://www.ihs.com/energy)

Support 403.770.4500

(8:00 AM - 5:00 PM MST)

Fax 403.770.4647