



Managing Multiple User Tops Databases & User Database Directory

IT Implementation Guide

For IHS Applications

IHS AccuMap®

June, 2009



Managing Multiple User Tops Databases & User Database Directory

IHS AccuMap

IHS Inc.

Managing Multiple User Tops Databases

As of the July 2007 release, v16.07, AccuMap's Managing Multiple User Tops Databases functionality gives users to the ability to *view*, *copy* and *merge* additional user tops sources using Tops Manager. They will also be able to use those additional user tops files for *posting*, *querying* and *contouring* in AccuMap.

You can choose to implement this at any time or not at all depending on your environment's security policies or user demand.

New configuration file - usertops.ini

- The usertops.ini will contain the name and locations for all user tops files that are available as additional user tops sources.
- The usertops.ini can be created and pushed out to all users to implement a standard configuration. Alternatively, the usertops.ini will be created automatically as users begin configuring additional tops sources.
- The new ini file will be located in %APPDATA%\AccuMap. This is the same location as the MapFeaturesControlStates.xml file which was new as of February 2006, v16.02.
- The usertops.ini can also be set to read-only to limit or standardize the tops files available as additional user tops sources. If the file is not read-only users will have the ability to add, change and remove additional user tops sources from their configurable list.
- Each user will have their own usertops.ini file.
- EXAMPLE FILE:

```
usertops.ini - Notepad
File Edit Format View Help
[USER TOPS SOURCE]
NAMEDIRECTORY0=ANN'S TOPS, U:\ALLUSERSTOPS\ANN
NAMEDIRECTORY1=BOB'S TOPS, U:\ALLUSERSTOPS\BOB
NAMEDIRECTORY2= JOHN'S TOPS, U:\ALLUSERSTOPS\JOHN
NAMEDIRECTORY5=ABC ENERGY STANDARD TOPS, \\SERV01\TOPS\ABC ENERGY
```

- **NOTE:** Both drive letter mapping and UNC path names are supported in the usertops.ini file.



Backup Options

- When users copy or merge tops from additional tops sources, they may choose to make backups of their user tops before any copy or merge actions. This will allow users to restore their tops if they are experimenting with the functionality but then decide they do not want to include other tops picks in their own user database. There can be up to 11 iterations of backups created however *only the last saved copy* will be accessible for users to restore from the application.
- The backup files will be created by default in user's AccuMap data folder in a folder called 'backup'. Their AccuMap data folder is usually the working directory specified during workstation setup or the first path indicated in their *Map Data Directory in Edit > Defaults*. Users can browse to another location to create backups if they wish.
- By default, there will be four levels of backup or undo but as mentioned previously users will only have access to the most recent copy. As each new backup is made the older ones move to the next numbered backup file. If users want to go back further you have the option as IT support to go into the backup folder and recover from the desired backup. The backup files date and time stamps are preserved as the data moves from one iteration to the next.
- Iterations are named:
 - utopa.dat, utopa.idx, uwela.dat, uwela.idx (Accessible copies from AccuMap)
 - utopa1.dat, utopa1.idx, uwela1.dat, uwela1.idx
 - utopa2.dat, utopa2.idx, uwela2.dat, uwela2.idx
 - utopa3.dat, utopa3.idx, uwela3.dat, uwela3.idx
 - etc.....Renaming the desired backup files to utopa.dat, utopa.idx, uwela.dat and uwela.idx will allow recovery from older backups.
- Disk space required will be the size of the owner's user tops files times the number of backup copies.
- If you are concerned about the disk space used for up to 4 copies of user tops files, you may change the number of backup copies saved by altering the BackupCount value in the accumap.ini file within the Tops Manager section. This value will default to 3 but can be set to any number from 0 to 10. The value set in this file will be read when Tops Manager is closed. Invalid data entries, letters or numbers over 10, will set the BackupCount value to its default, 3.



```
accumap.ini - Notepad
File Edit Format View Help
[Tops Manager]
workingDir=U:\ACCUMAPIPL
MainFrame=88,88,1048,624
Maximized=1
LastBackupDir=C:\ACCUMAP\backup
BackupCount=3
MultiwellSelectorSize=1276,101
MultiwellSssSize=1276,1511
WellHeaderSize=12,388
LeftwellSize=435,117
LeftwellTopSize=435,264
RightwellSize=815,117
RightwellTopSize=815,264
Currentwell=100060600101W400,1
MultiwellUserOrProvider=International Petro-data Limited
MultiwellWellSource=All wells
MultiwellAtATime=7
MultiwellFileName=
```

- **NOTE:** This is a supplemental backup solution for AccuMap. Industry expectations are that you have a backup strategy in place to restore user data.

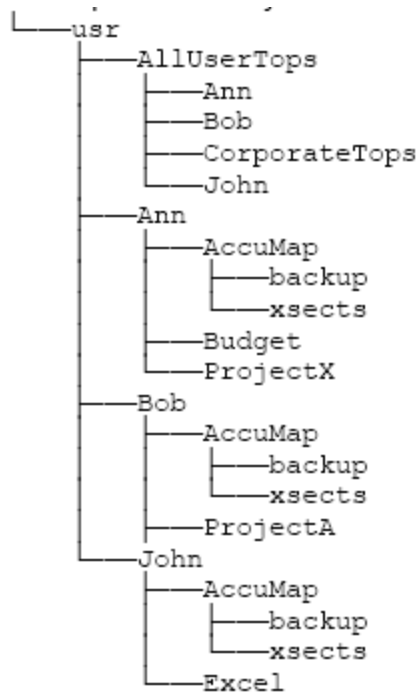
Recommended Setup

Directory Structure

- One recommended method for optimal performance for Managing Multiple User Tops Databases is to create a DFS share containing individual user folders for each participating user. Each individual user folder will contain the respective user tops files: *utopa.dat*, *utopa.idx*, *uwela.dat*, *uwela.idx*, *ufatr.dat*, *ufatr.idx*
- If you decide to create a new share to house user tops files only (no other user data folders or files) this new path will need to be included in the Map Data Directory path in Edit -> Defaults preferably *before* any enerdata folder entries. EX:
\\Ann\AccuMap\;u:\AllUserTops\Ann;p:\apps\AccuMap\bin.map\enerdata



- Example Directory Structure:



- **NOTE:** You can easily specify where AccuMap looks for user tops files using User Database Directory. See the section on setting up a user's User Database Directory.

Permissions

- All folders containing user tops files for participating users will need to have read and write permissions as will the user tops files.
- For share permissions, change and read are required. For file permissions, depending on your environment, you may need to assign additional rights.
- Within AccuMap and Tops Manager, users will have *only one writable set of user tops* and all additional user tops will be read-only.

Workstation Setup

- For existing users, NO workstation setup is required for this implementation.



User Database Directory

As of AccuMap's August 2007 release, v16.08, you can explicitly state the location of a user's user tops files. This gives another layer of control for user database files.

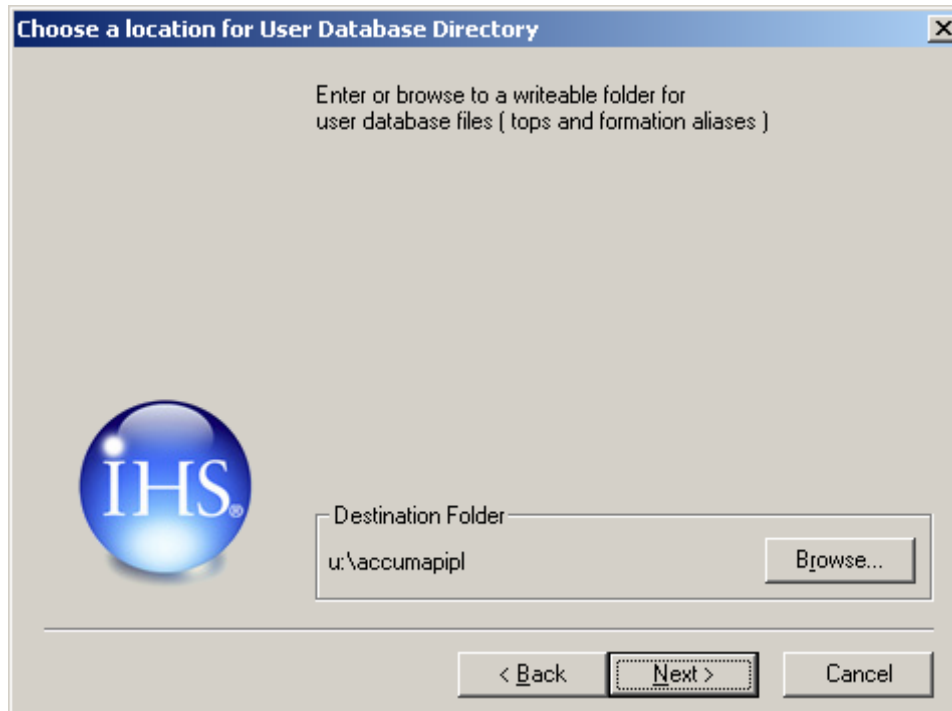
- For existing users AccuMap will set the location of the user database directory to the same location as the working directory. You can determine the location of both directories in *Edit > Defaults*. The location of the working directory is listed in the Map Data Directory path, usually the first location listed. The location of the user tops databases is listed in the User Database Directory path.
- For new users, you will be asked to specify the location of the User Database Directory directly after you specify the working directory during workstation setup.
- You can change the location of the User Database Directory path any time after setup by running another workstation setup and Browsing to the new location or in *Edit > Defaults*. If you choose to change the User Database Directory path in *Edit > Defaults* a restart of AccuMap will be required to recognize the new path.

Edit > Defaults

Accumap Defaults	
Your Company Name:	ABC Energy
Map Data Directory:	u:\AccuMap\
User Database Directory: (User Tops)	u:\AccuMap



Work Station Setup



- **NOTE:** Registry - [HKEY_CURRENT_USER\Software\AccuMap EnerData] under a LastSession key. (*Advised in Technical Communication email sent April 5, 2006*)



Glossary of Terms

utopa.dat & utopa.idx – User tops data and index files. These files must be located together and with the uwela set of files in order for users to see user tops.

uwela.dat & uwela.idx - Well information and index files. These files must be located together and with the utopa set of files in order for users to see user tops.

ufatr.dat & ufatr.idx - Formation alias data and index files. These files must be located together and can be stored in another location from the other user data files but must be in a folder in one of the paths in the Map Data Directory. We recommend all three sets of files be located together in one location.

DFS – Distributed File System

Other Reference Documents

DFS Share - http://energy.ihs.com/NR/rdonlyres/CE6BD4A3-32D7-4D18-AB09-09A47EF3FA03/0/Microsoft_Distributed_File_System_for_User_Tops.doc

For a user guide for Managing Multiple User Tops Database please call Customer Support at 403.770.4500.