



# User Database Directory

For IHS Applications

IHS AccuMap®

June, 2009



# User Database Directory

## IHS AccuMap

### IHS Inc.

#### **Executive Summary**

This document discusses an AccuMap software change which will allow sites to better manage user database files.

#### **1.0 - Project Purpose**

This change will provide a distinct setting of the location(s) AccuMap products will search for user database files (user tops and formation attributes), independent of the AccuMap "Map Data Directory" setting. When the files are not found in this location AccuMap will create them.

#### **2.0 - Current Behaviour**

AccuMap uses a configuration file named default.cfg. One purpose of this file is to define where data is located for the AccuMap suite of products.

default.cfg is read by AccuMap at startup to update information in the Windows registry that other AccuMap data clients will use. Changes to default.cfg (through AccuMap Edit | Defaults) may require restarting AccuMap to take effect.

The *location* of default.cfg defines a unique session for AccuMap. On startup, AccuMap writes that session to HKEY\_CURRENT\_USER\Software\AccuMap Enerdata\LastSession, and updates the values for that session.

In a *standard install*, the "Map Data Directory" setting in default.cfg completely specifies the paths used to locate vendor supplied data and user databases. In this case, the registry value <session>\DataDir is updated to exactly match "Map Data Directory" during each restart of AccuMap.

In a *parallel install*, <session>\DataDir is updated from the "\*" entry in current.ver at startup. The search method for data files appends those paths onto the "Map Data Directory" entry read from default.cfg as it exists when the data files are accessed. For this reason, in a parallel install, changes made to default.cfg from AccuMap can alter the search path used by other AccuMap data clients without restarting AccuMap.

If one user's default.cfg does not include a user-writeable directory before "enerdata" in the Map Data Directory entry, AccuMap's search and create-if-missing behaviour will create the user database files in the enerdata folder, if that



folder is writeable. Other users may then be trapped into sharing these files and will not create their own on startup.

Currently AccuMap uses three database file pairs: ufatr.dat/.idx, utopa.dat/.idx, uwela.dat/.idx. Although each file of a pair (.dat and .idx ) must be in the same folder, that is not required for the databases themselves, nor does this change require moving them. However for the purpose of supporting multiple user tops databases, it is *recommended* that clients consolidate these files into one folder.

### **2.1 - Behaviour introduced in AccuMap v16.08**

A new default.cfg entry (User Database Directory) and session key (UserDatabaseDir) is added to explicitly define where the user database files are searched for and created. This new setting can be created by running AccuMap User Database Directory 24-Jul-06 2 v16.08, or by performing a WorkStation setup. For existing users we recommend running AccuMap v16.08.

The AccuMap transition mechanism will discover the location(s) of the user database files actually in use, and create a corresponding entry in default.cfg if it does not exist. This *does not require intervention* on the part of users or system administrators. The location of user database files following the change will be exactly as before, *even when they exist in the enerdata folder*. No additional files should be created.

Once the transition code has created the new entry in default.cfg, only the setting in default.cfg will be used by AccuMap and other AccuMap data client applications.

At some sites, the user databases (ufatr, utopa, uwela ) may not be in the same folder; this may be deliberate or accidental. We do not recommend splitting the locations of these files, but this change will accommodate it by creating a User Database Directory entry in default.cfg which has multiple paths delimited by semicolons.

When the transition has occurred AccuMap data clients will search for the user database files only in the path(s) specified in registry value <session>\UserDatabaseDir. This registry key is updated from default.cfg only during AccuMap startup. AccuMap must be restarted for any change in the User Database Directory entry in default.cfg to have an effect.

The transition mechanism will be removed in some future version of AccuMap.

On AccuMap startup, if the user database files cannot be found or created, the user will be prompted to edit default.cfg via Edit | Defaults, enter a correct path



and restart AccuMap. As with Map Data Directory, Edit Defaults does not provide a browse mechanism for selecting the folder, nor will it create empty folders.

### **2.3 - Behaviour added to AccuMap Workstation setup**

An additional form in workstation setup following selection of the "Destination Folder", allows entry of a location for user database files.

If a default.cfg exists at the location specified as the "Destination Folder", and it contains a "User Database Directory" entry, that text is supplied as the initial value. If it does not exist, such as in a new workstation, the defaulted initial value is the "Destination Folder".

If an existing "User Database Directory" entry in default.cfg is a single path, it is presented in a dialog which allows browse, selection and creation of a new folder. On "Next" the single path is written to the User Database entry in default.cfg.

If the existing "User Database Directory" entry is multiple paths it is presented in a text dialog without browse, folder validation or creation. On "Next" it is written as-is to the default.cfg "User Data Directory" entry.

Before the final phase of the installation, the settings are displayed for confirmation. "Back" will allow different selections to be made.

### **2.4 - Additional Information in Accudiag**

Accudiag will display the registry value of UserDatabaseDir and default.cfg values of User Database Directory. In the "User database files information" section, each default.cfg found in the -p paths is used to look for user database files (this is the User Database Directory 24-Jul-06 current behaviour). If the default.cfg has a "User Database Directory", that is used as the search path, otherwise "Map Data Directory" is used.



### 3.0 User Interface Changes

#### 3.1 AccuMap Edit | Defaults Dialog

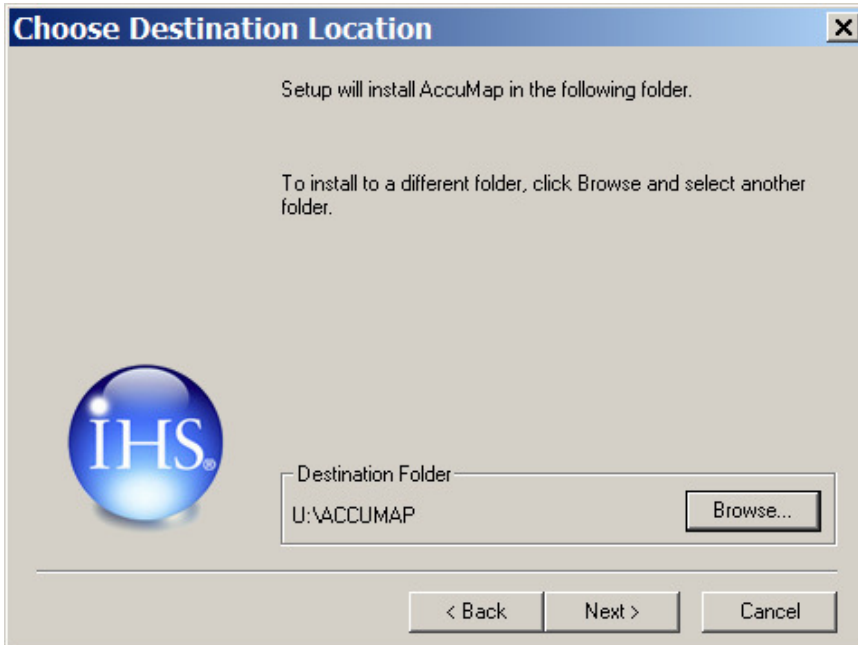
Adds a User Database Directory text edit box:

The new text box modifies the User Database Directory line in default.cfg:  
2027 -1 { "U:\ACCUMAP\TOPS" } "User Database Directory"

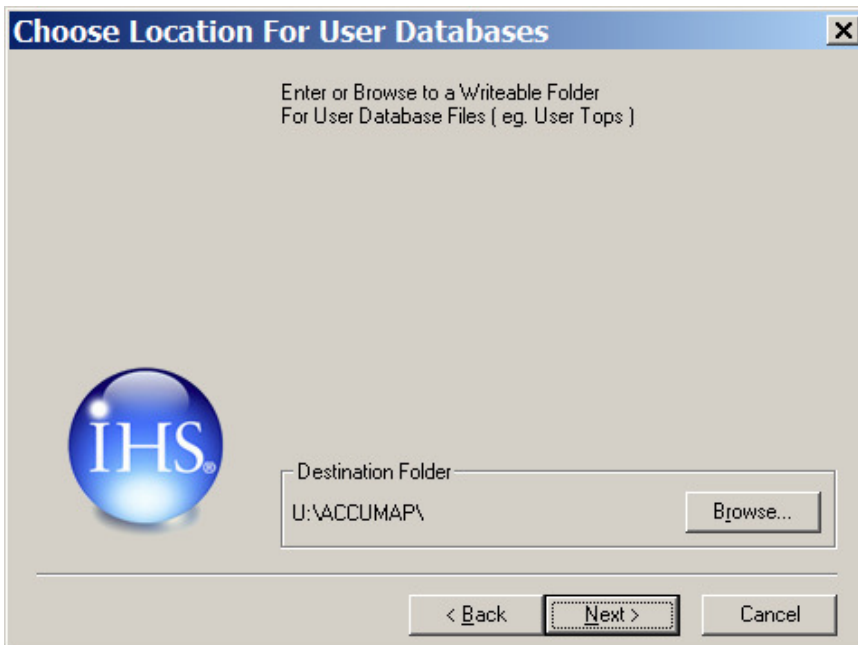


### 3.2 AccuMap WorkStation Setup

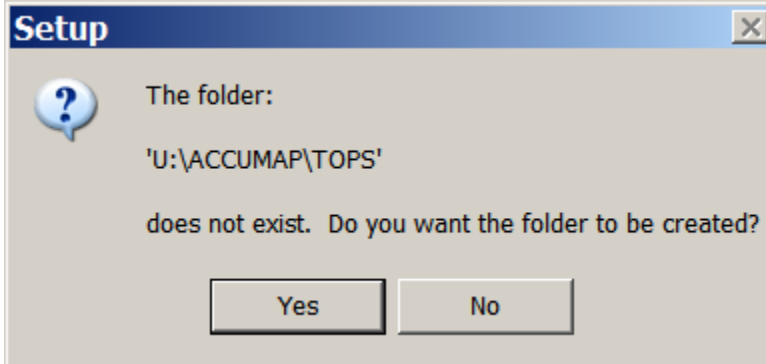
The destination chosen in the "Choose Destination Location" dialog:



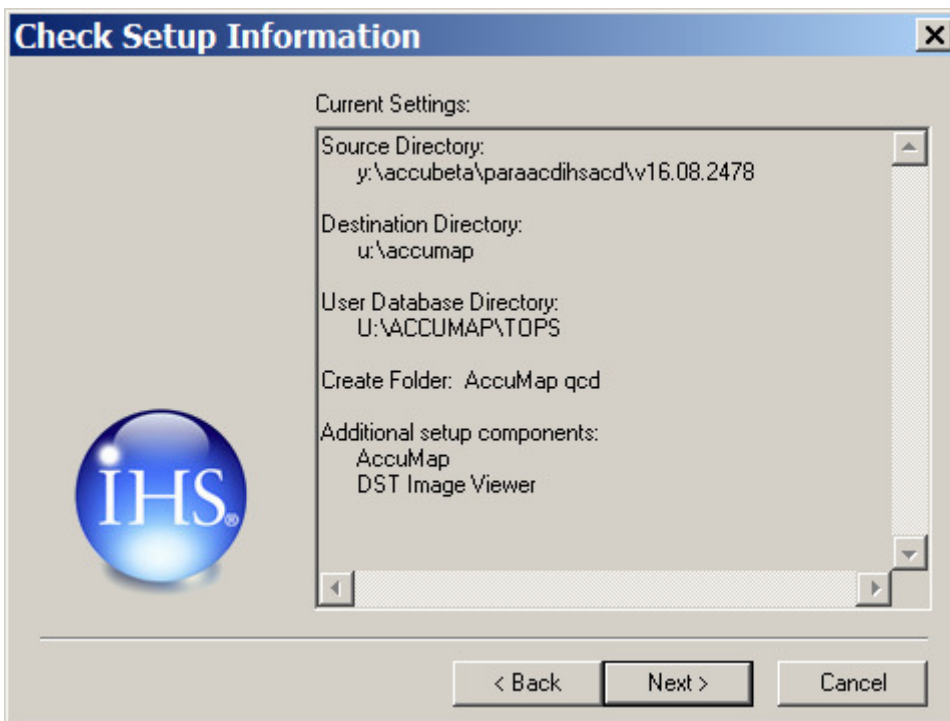
is presented as the default location for User Database Directory in a new "Choose Location For User Databases" Dialog:



If this folder is new, it may be created:



Before the final phase of the installation, the settings are displayed for confirmation. "Back" will allow different selections to be made.

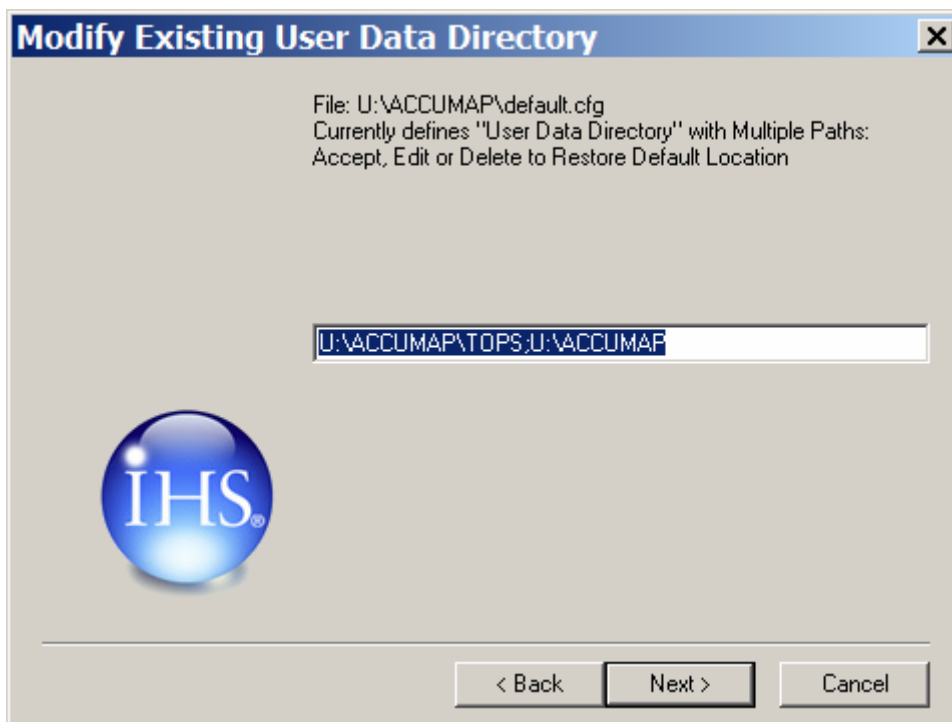




If multiple paths are specified in an existing default.cfg found in the "Destination Location", eg.

2027 -1 {"U:\ACCUMAP\TOPS;U:\ACCUMAP\"} "User Database Directory" they are presented in the "Modify Existing User Data Directory" dialog; this dialog treats the User Database Directory entry purely as text. Folders are not verified or created and text edits are written to default.cfg as is.

If the entire entry is deleted then the previous "Choose Location for User Databases" dialog is presented with the "Destination Folder" as default location.





### 3.3 Accudiag diagnostics program ( Tools | Diagnostics )

Add display of registry value for UserDataDir for each session.

```
AccuMap last session registry settings:
=====
Session ID (*last*) : E631DCE3
AccuPath : C:\AccuMap; C:\accumap\chd\program\nt;
default.cfg in : C:\AccuMap\
Command line : -p "C:\AccuMap; C:\accumap\chd\program\nt;"
Database in : C:\AccuMap;Y:\acdihsacd\Bin.Map\Enerdata
Startup directory : C:\AM\QCD\UDD\
accu32.exe in : C:\BLD\UDD\src\compile\nt\
current.ver in :
UserDataDir : C:\AccuMap\Tops
```

For those sessions which do not have this registry entry, display of the session will be followed by an error message and the value shown will be an empty

```
T36_GetRegUserDataDir() error: The system cannot find the file
specified.
```

The sections which search for user tops files will search the default.cfg entry for "User Data Directory" if that exists, otherwise the "Map Data Directory"

```
User database files information:
=====
First Search - "User Data Directory": C:\AccuMap\Tops
Then Search - Database in: C:\AccuMap;Y:\acdihsacd\Bin.Map\Enerdata
```