



# Installing IHS AccuMap Fonts

For IHS Applications

IHS AccuMap®

June, 2009



## How to Install IHS AccuMap Fonts IHS Inc.

This document outlines the procedure to install AccuMap font files into the Windows font folder to allow the use of AccuMap symbols in MS Word and PowerPoint documents. This will correct the problem where you cut & paste a map into the Word document and the well symbols appear incorrectly as letters (unless you have AccuMap running at the same time).

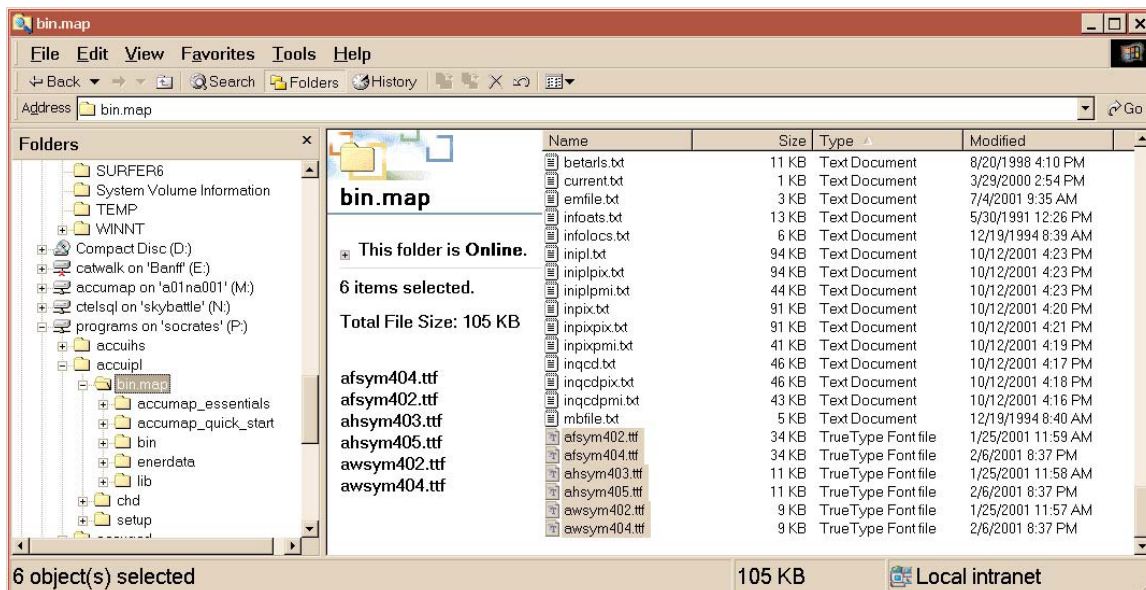
### 1.0 - General Information

How to Install AccuMap Fonts in the Windows Fonts folder.

### 2.0 - Procedure

AccuMap use several font files that are not part of the windows installation. If you copy maps to applications such as PowerPoint or MSWord, the well symbols may not appear correctly if these fonts are not installed in the windows Font folder.

1. The AccuMap font files are found in the *bin.map* directory under the *AccuMap* installation on the server. The font files are shown highlighted in the image below:



2. Now go to *START/Settings/Control Panel*

3. Select the *Fonts* folder and then click on *FILE/Install New Font*



4. In the *Add Fonts* window, select the drive/directory and locate the *bin.map* folder

Select the AccuMap Font files and check the '*Copy fonts to Fonts folder*' option. Note that in this window the names of the fonts will differ and should begin with the word 'AccuMap' (ie., AccuMapFacilitySymbols (TrueType)). This will install the fonts so that you do not need to have AccuMap running in order to have the well symbols properly displayed in PowerPoint or MS Word.

