

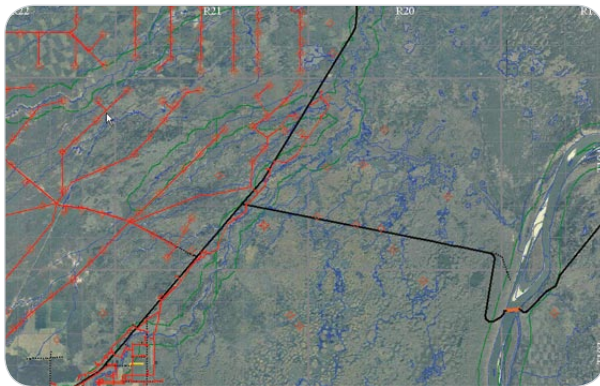
Transportation Infrastructure Database (TID) in AccuMap®



The Source
for Critical Information and Insight™

Connecting E&P data to the most comprehensive and spatially accurate GIS transportation network; helping move people, equipment and resources faster, more responsibly and cost effectively

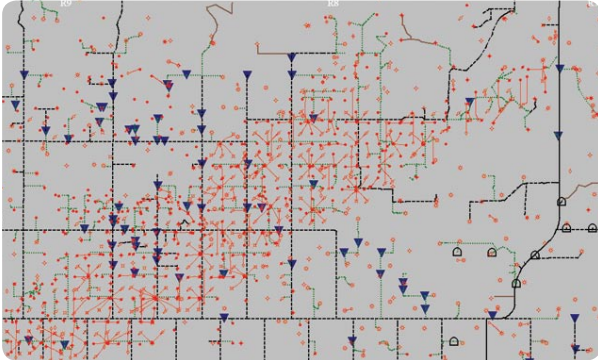
Developed jointly with IHS and GDM, the IHS Transportation Infrastructure Database module in AccuMap provides single source access to the most comprehensive transportation information for Western Canada and the Territories. For E&P and Service companies supporting the energy industry (drilling, pipeline, environmental companies, etc.), understanding the transportation infrastructure is critical to ensuring the fastest, most responsible, and cost effective movement of equipment, people and resources. This information can literally save hundreds of thousands of dollars in transportation costs per year.



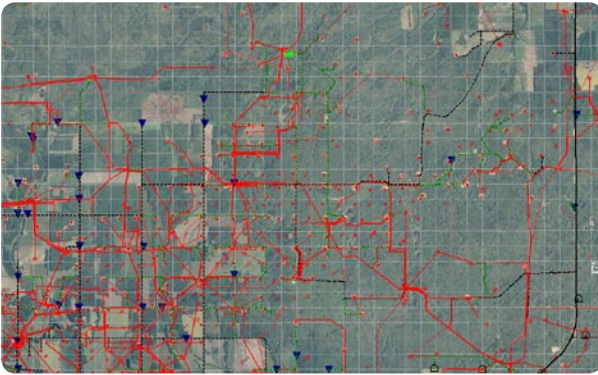
View Ortho photos, with wells and pipes. Add rivers from the Culture Layer and Water Course Crossing for rivers from the Environmental Layer. View Main, Industry and Collector Roads, as well as Ferry Crossing information

TID provides real-world context for decision-makers addressing;

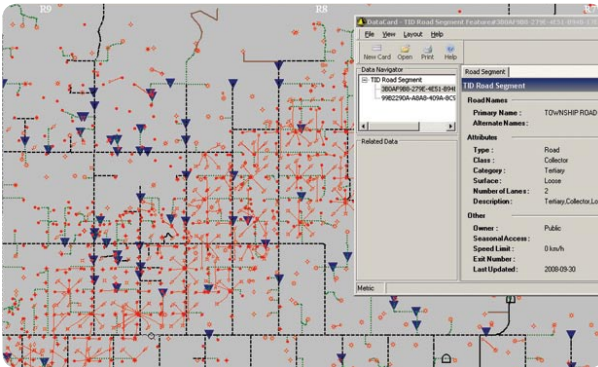
- Surface access and planning,
- Vehicle location and routing,
- Emergency response planning,
- Well and facility location,
- Pipeline construction,
- Well site remediation,
- Network analysis,
- Project planning & logistics,
- Negotiating land use,
- Asset monitoring and tracking,
- Environmental assessment and,
- Cartography and mapping.



View Collector Roads and Industry Roads. Show blocked passages and toll points. Well layer turned on.



Add pipes and gas plants. Ortho layer turned on.



View road attributes and get a complete picture.

About the Information

TID has superior accuracy and detail in terms of road networks, surface access and road attributes. Information is consolidated from a number of sources and includes:

- Wellsite, facility and resource lease roads
- Road ownership and names
- Road restrictions
- Detailed route classifications with private and public designations
- Topologically correct road network
- Connectivity to wellsites and facilities

With TID in AccuMap, you can quickly and easily:

- display on maps
- inspect
- query
- print

Additional functionality will continue to be added as it becomes available.

TID is also available through IHS Enerdeq Desktop Canada, and on the IHS Hub in application-ready spatial data formats.

Committed to Excellence

Together, GDM and IHS are committed to making this information the best it can be. Clients are encouraged to submit additions, edits, ownership changes, deletions, or omissions directly to GDM. You can also have your proprietary resource roads added. For more information contact Brian Hall directly 403.547.9154 or email roads@geomaticsdata.com.

For more information or to request a free trial in AccuMap, call your Account Executive today at 403.770.4646.



The Source

for Critical Information and Insight™

For more information

Sales & Training 403.770.4646

www.ih.com/energy

Support 403.770.4500

(8:00 AM - 5:00 PM MST)

Fax 403.770.4647