



IHS AccuLogs Measurement Tools

For IHS Applications

IHS AccuLogs®

June, 2009

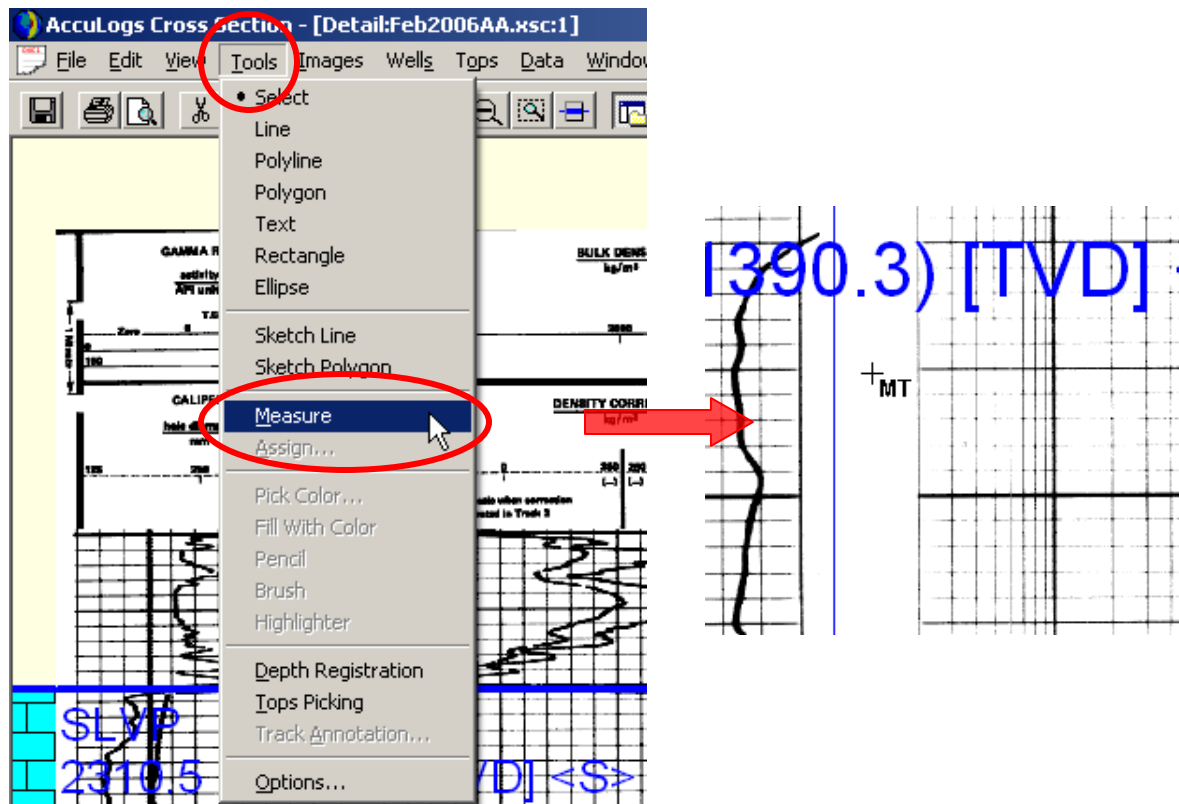


IHS AccuMap Measurement Tools IHS Inc.

Did you know that you can measure vertical thicknesses directly on your logs?
Did you know these thickness measurements can be assigned to your database?
With AccuLogs 7.5 you have the power to do both!

To measure the distance between two vertical points on a log:

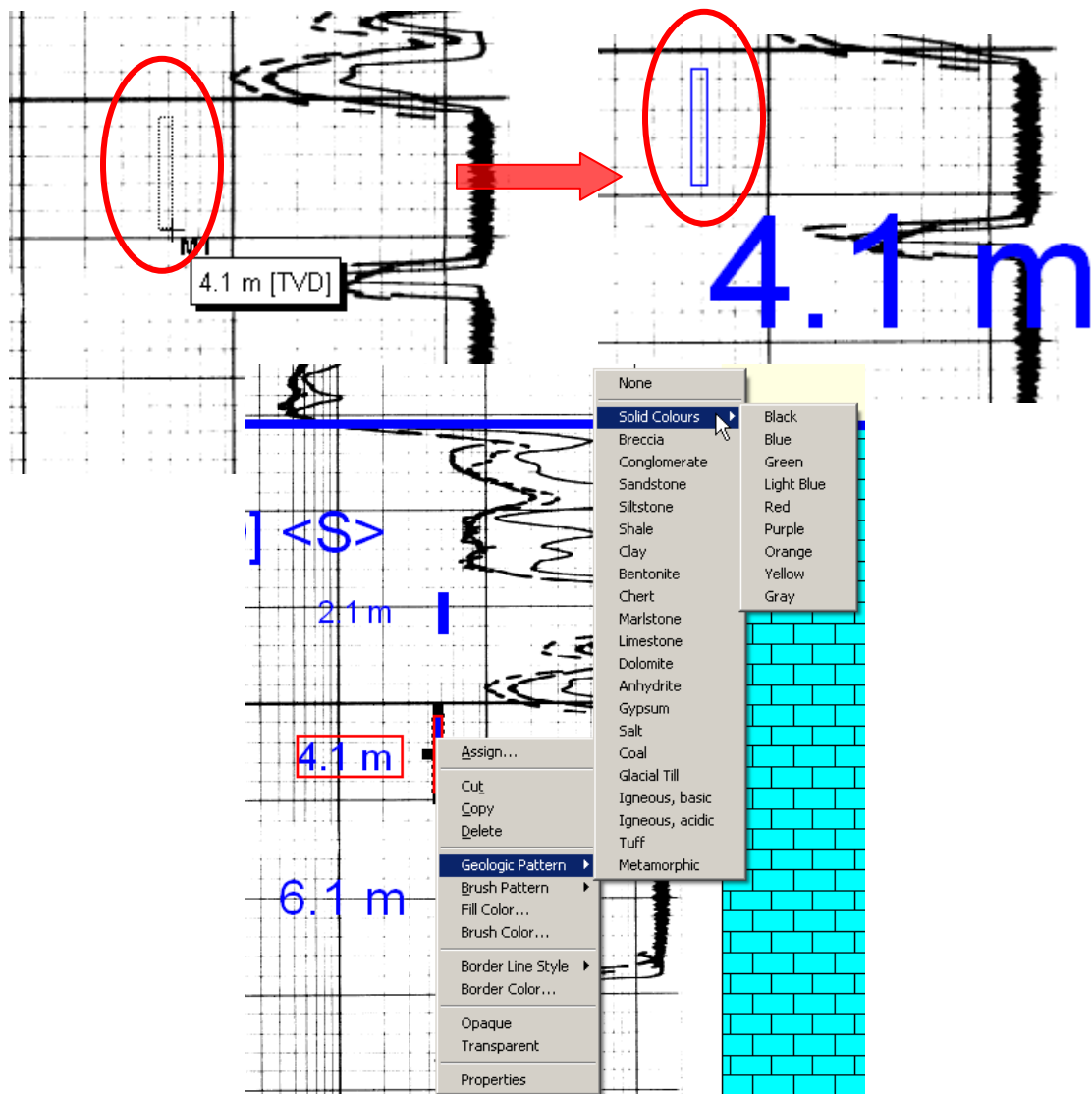
1. From the menu bar, select *Tools > Measure* and left click with your mouse to select.





2. Holding the left mouse key, drag the cursor from the desired start point to end point. Release the left mouse key. Repeat for multiple measurements.

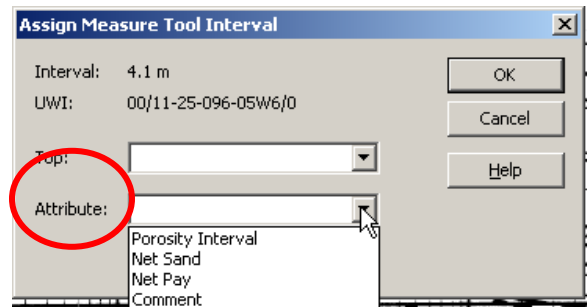
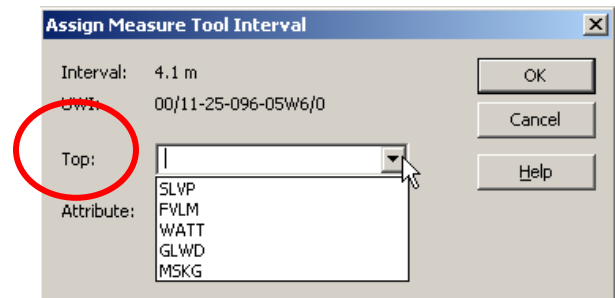
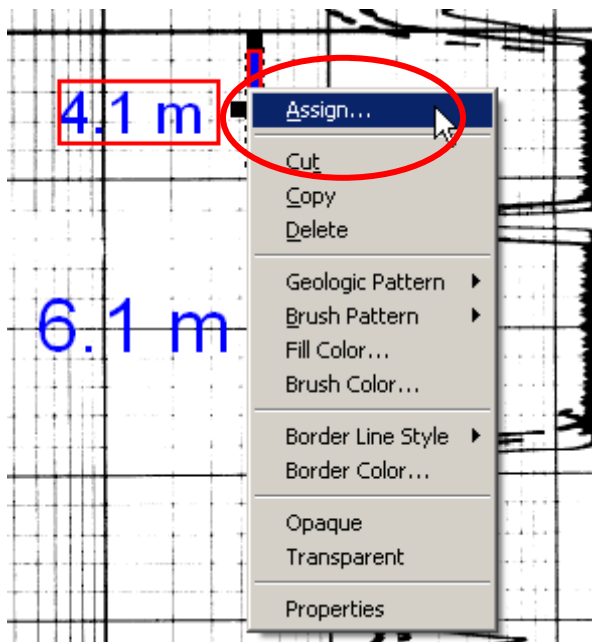
- The vertical thickness of the interval appears in a text label alongside the interval marker you have drawn
- The interval marker and label are anchored to the log at the start point. These markers move with the point they are anchored to when changing the datum.
- The display properties of both the interval marker and the interval text label can be changed by right clicking on each of the objects.





To assign the interval thickness to a formation top and update your user database with the interval thicknesses as porosity, net pay, net sand or a comment:

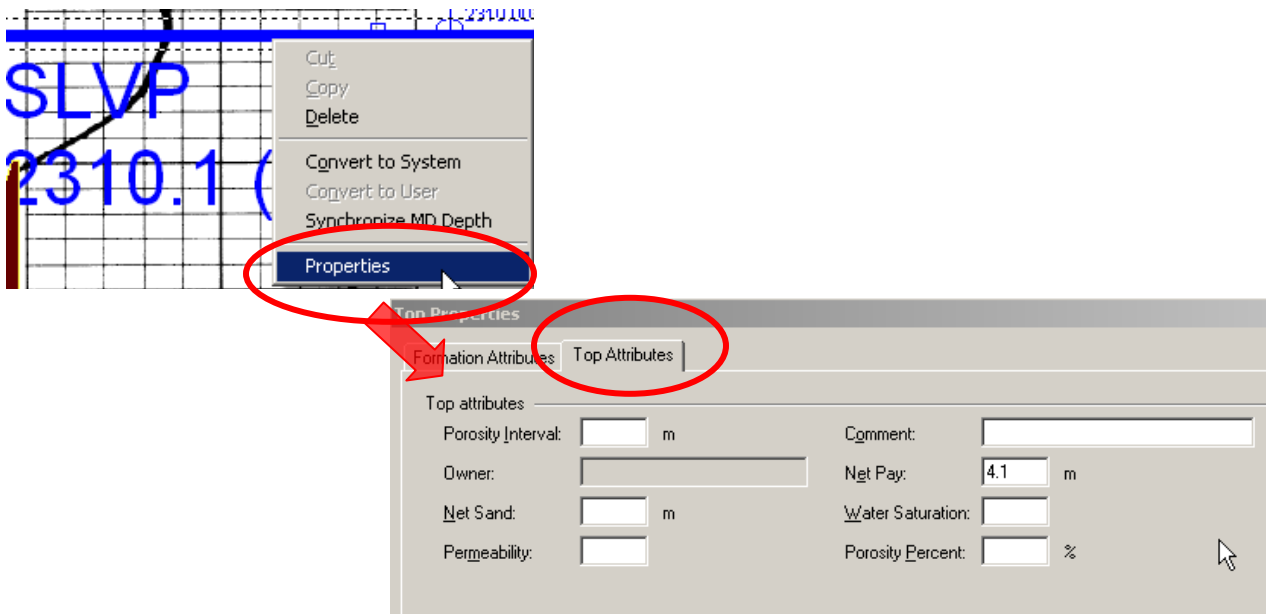
1. Right click on the interval marker, and select *Assign*.
 - Select multiple markers to assign a summed value to a single formation. Hold the CTRL button and left click each interval to multiple select and right click on only one interval to select the assign option.
2. Select from the drop down list the formation you want to assign the Interval Thickness to.
3. Select from the drop down list the Attribute you want to assign the interval to. This column will populate in the database for the selected formation.





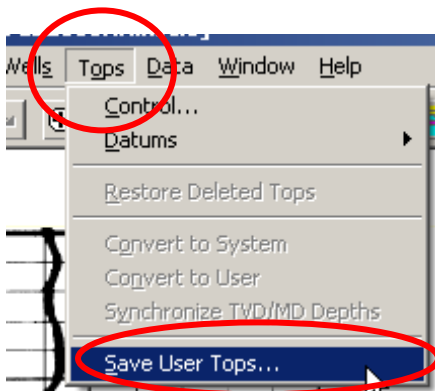
To View Assigned Values

- Right click on the Formation Top and select *Properties*. Click on the *Top Attributes* tab.



To Save Interval Thickness to the User Tops Database

- Go to *Tops > Save User Tops*.





Contacting Customer Support

Contact IHS Customer Support for assistance with any questions or problems not answered in this help document.

Telephone: 403.770.4646
Help Desk: 403.770.4500
Fax: 403.770.4647
E-mail: support.cdn@ihs.com
Web site: www.ihs.com