

# GeoSyn™

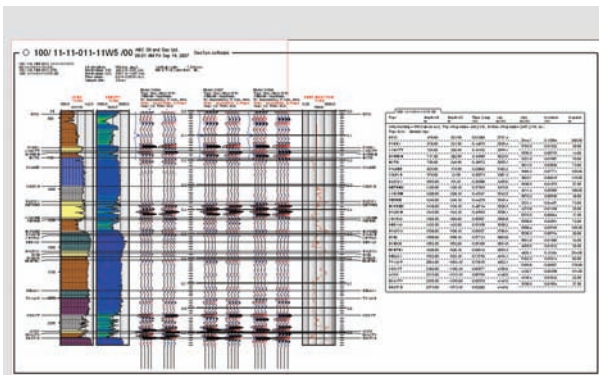
Expanding functionality focuses on Geologists



**The Source**  
for Critical Information and Insight™

GeoSyn 5.5 continues to include important new functionality for Geophysicists and now incorporates functionality designed specifically for Geologists.

With the 1D application, Geologists have the power to easily create synthetics to verify a seismic response directly from IHS AccuMap®, saving time and money. With the 2D application, Geologists have the capability to view interpolated log traces between the wells of their cross section. Historically, GeoSyn contains this functionality for the sonic logs, and with the newest release, the user can now see the entire suite of logs from within GeoSyn.



Right-click function within AccuMap to view synthetics.

## GeoSyn 1D

Synthetic creation, modeling and AVO analysis

### Drive your own plays: GeoSyn integrates with AccuMap

While your play is developing, a simple right-click function within AccuMap allows Geologists to view synthetics to verify seismic responses. Not only does this save a Geologist's time, it provides the data required to confirm the purchase of seismic for Geophysicists.

Better understand the lithology of areas through crossplots. The integration allows Geologists to confirm the lithology in areas within minutes by crossplotting gamma rays and sonic logs.

Access AccuMap user tops with ease. GeoSyn's direct view of AccuMap user tops saves Geologist's time on importing and exporting tops to and from third party applications.

