

IHS ENERGY

THE ACCUMAP LICENSE MANAGER SERVICE & ACCUMAP LICENSE FILE

Overview and installation guide for Windows 2000, XP & Vista



The Source for Critical Information and Insight™

Stampede Station
Suite 200, 1331 MacLeod Trail SE
Calgary, Alberta, Canada
T2G 0K3

Customer Support
+1 (403) 770 4500
support.cdn@ihs.com
www.ihs.com/energy

June 2009

OVERVIEW

This document was written for all audiences with its main purpose being to illustrate the second set of steps required to get AccuMap up and running after it is installed for the first time. For clarification purposes, the term “AccuMap” refers to **accu32.exe**, which the end user sees as an AccuMap icon (shortcut) on the desktop after running an AccuMap workstation setup.

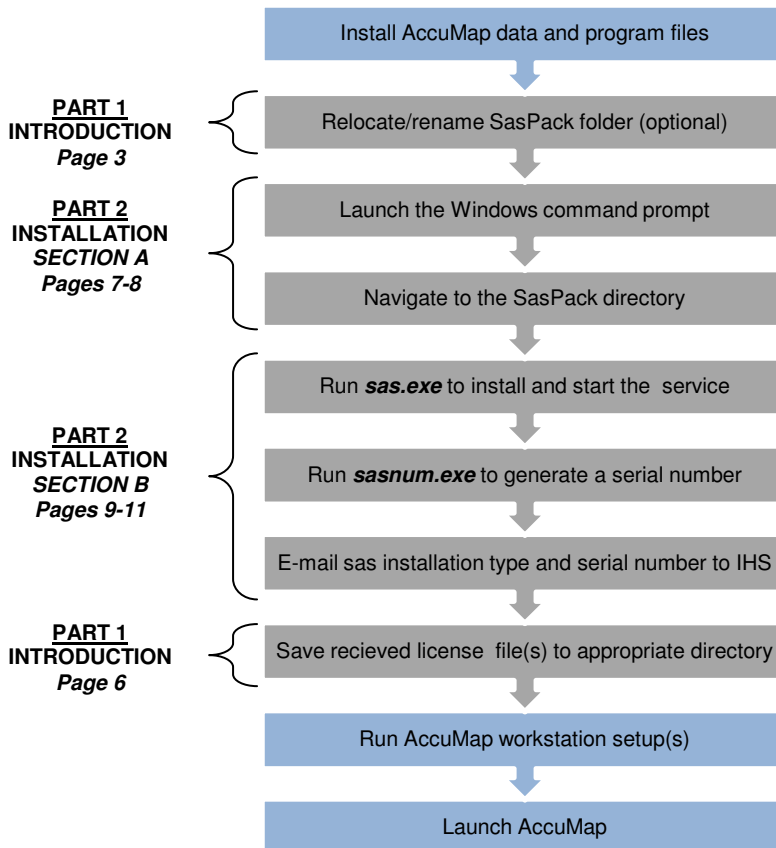
It is divided into two parts. **PART 1 – INTRODUCTION** provides a background on the AccuMap License Manager Service and the AccuMap License File. It explains what they are, where they’re located, and how they interact.

PART 2 – INSTALLATION deals with the installation of the AccuMap License Manager Service itself. However, because the process takes place in the Windows command prompt, it’s divided into **SECTION A – ACCESSING THE INSTALLATION DIRECTORY**, which details how to open and navigate this component, and **SECTION B – RUNNING THE INSTALLATION COMMANDS**, which details the actual installation commands and what is required afterward.

If you need additional assistance with this procedure, contact the Calgary Customer Support department at (403) 770-4500 or e-mail support.cdn@ihs.com.

ACCUMAP INSTALLATION PROCESS FROM START TO FINISH

Processes in grey are covered in this document



CONTENTS

PART 1 – INTRODUCTION

The AccuMap License Manager Service	Page 1
--------------------------------------------	---------------

The AccuMap License File	Page 5
---------------------------------	---------------

PART 2 – INSTALLATION

SECTION A – ACCESSING THE INSTALLATION DIRECTORY

Launching the Windows command prompt	Page 7
---------------------------------------------	---------------

Navigating to the SasPack directory	Page 8
--------------------------------------------	---------------

SECTION B – RUNNING THE INSTALLATION COMMANDS

Running sas.exe to install and start the service	Page 9
---------------------------------------------------------	---------------

Running sasnum.exe to generate a serial number	Page 10
-------------------------------------------------------	----------------

APPENDIX

Determining your Windows User Account type	i
---------------------------------------------------	----------

Determining your Windows computer name	ii
-----------------------------------------------	-----------

SAS installation returns “OpenSCManager() Failed. Error Code 5”	iii
------------------------------------------------------------------------	------------

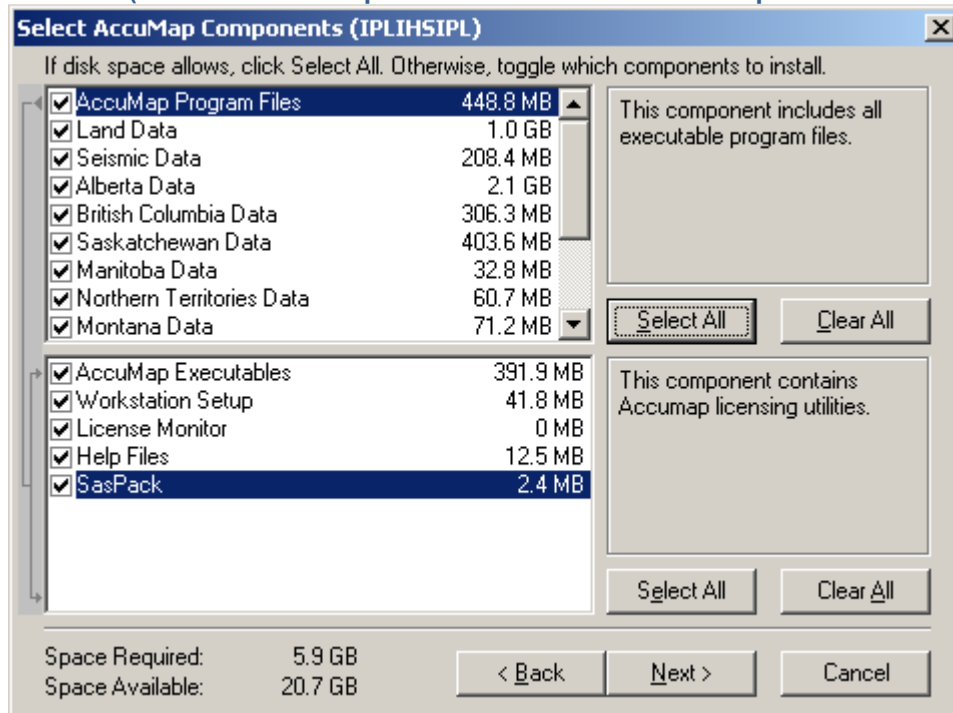
PART 1 – INTRODUCTION

The AccuMap License Manager Service

The AccuMap License Manager Service is a service which helps to control access to AccuMap's data files by keeping a constant track of the modules in use and relaying that information back to AccuMap for comparison against the total modules available in the license file. Failure to have the AccuMap License Manager Service installed and running will prevent a successful start-up of the software.

The installation files for the service are initially and most typically thereafter obtained by check marking the SasPack component during the component selection of an AccuMap install (Picture A). The folder may also be obtained by contacting the Calgary Customer Support department.

Picture A (The SasPack component as seen on the AccuMap installation disk)



The folder contains 11 program files and is only about 2.5 MB in size. The two files the installer need be concerned with are **sas.exe** and **sasnum.exe**, which are used to install the AccuMap License Manager Service and generate a serial number for the AccuMap License File respectively.

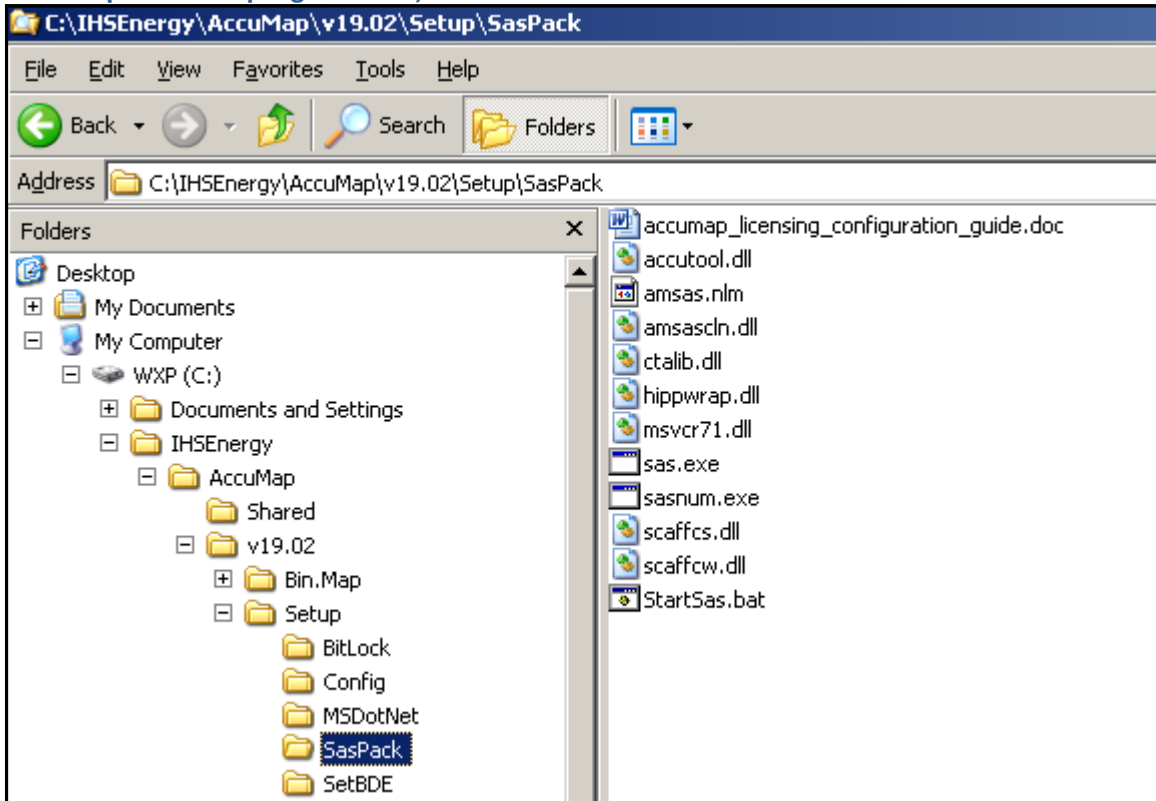
Depending on whether a parallel or stand-alone installation of the AccuMap data and program files was chosen, the SasPack folder gets created in either:

C:\IHSEnergy\AccuMap\v##.##\Setup\SasPack (Picture B)

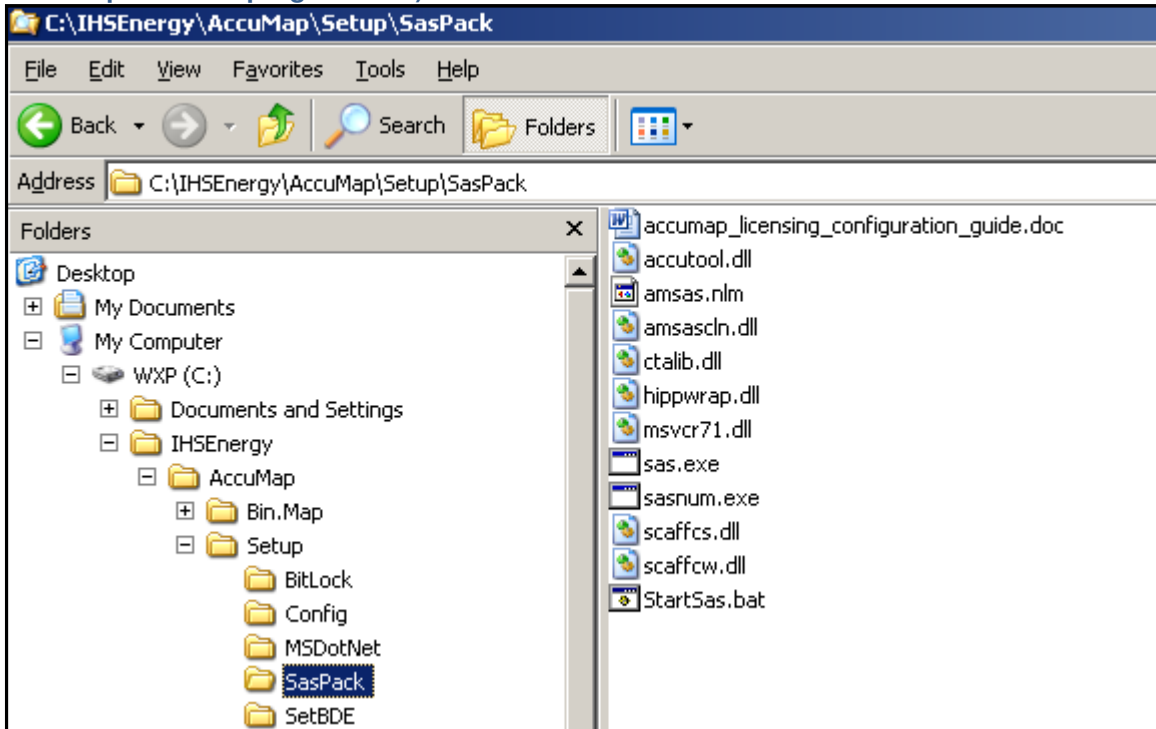
Or

C:\IHSEnergy\AccuMap\Setup\SasPack (Picture C)

Picture B (Default location of the SasPack folder after a parallel installation of the AccuMap data and program files)



Picture C (Default location of the SasPack folder after a stand-alone installation of the AccuMap data and program files)

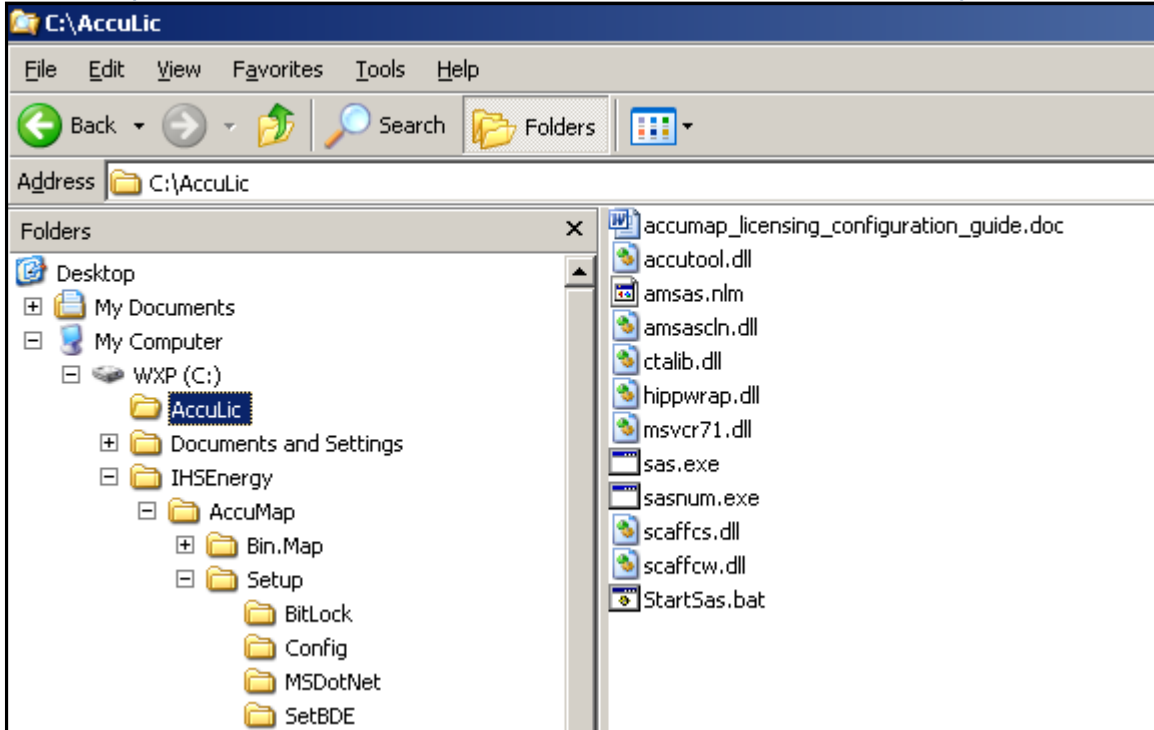


The AccuMap License Manager Service & AccuMap License File

After its creation, the SasPack folder can be renamed and/or moved to another location, either on the same computer as the AccuMap data and program files or on a different computer altogether, so long as the computer it resides on is part of the network. R/W permissions to the SasPack files and all its parent folders must also be granted to any account requiring the use of AccuMap.

NOTE: A common practice carried out by Field Support technicians during an on-site installation is to move the SasPack folder to the root of the installation drive and re-name it "AccuLic" (Picture D). Though this practice is not at all necessary for AccuMap to function correctly, it clearly separates the service files from the data and program files, which can aid in any future troubleshooting.

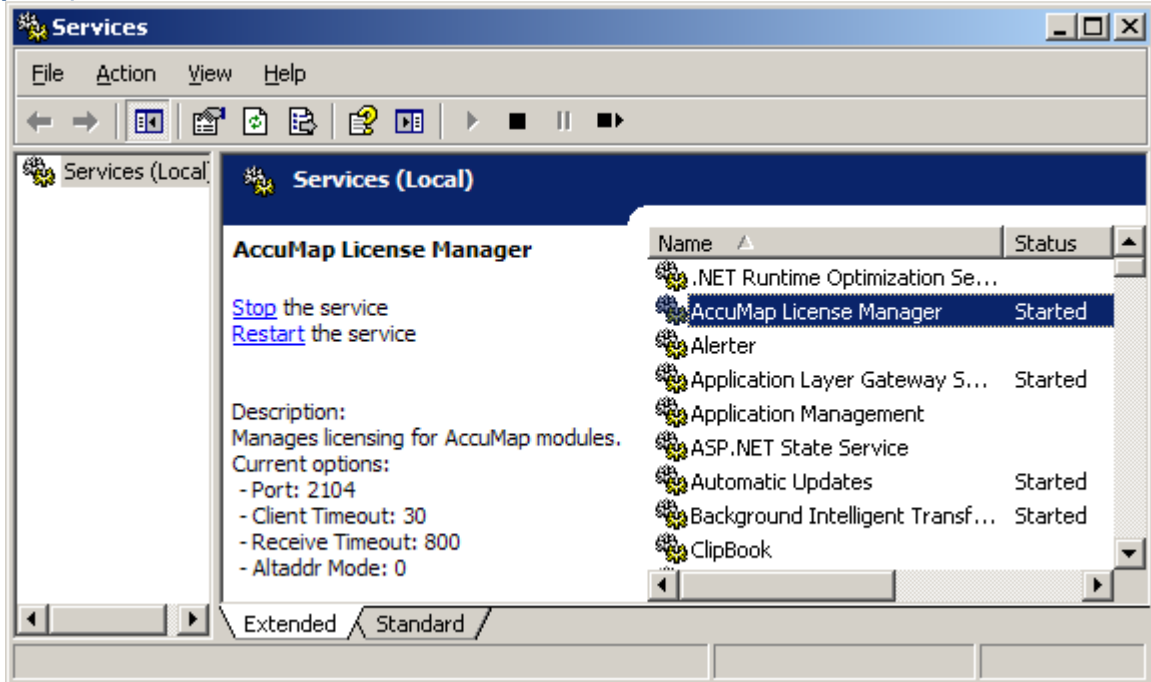
Picture D (The SasPack folder has been moved to C:\ and renamed AccuLic)



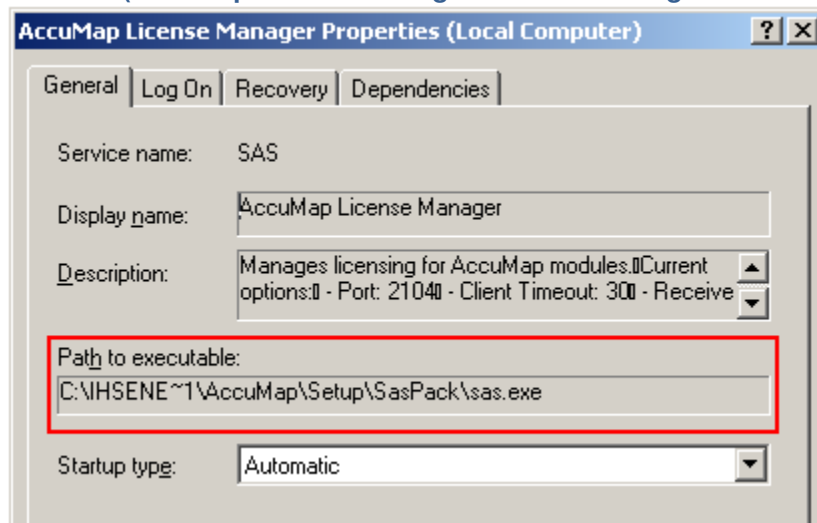
The AccuMap License Manager Service & AccuMap License File

Once the SasPack folder is in place, the AccuMap License Manager Service can be installed (**See PART 2 – INSTALLATION**). After installation, its status and path can be accessed through the Windows Services panel (**Start → Settings → Control Panel (Classic View) → Administrative Tools → Services**) (Picture E). As previously mentioned, the service needs to be running in order for AccuMap to successfully launch; a running service will have a status of “Started” while a non-running service will simply have no status. The service’s path can be seen by right clicking on it and choosing “**Properties**” (Picture F). The path of the service is required for both troubleshooting and removal purposes.

Picture E (The AccuMap License Manager Service as seen through the Windows Services panel)



Picture F (AccuMap License Manager Service running from the default installation path)



The AccuMap License File

The AccuMap License file (**sssk.dat**) is a small data file, which is accessed by both AccuMap and the AccuMap diagnostics program (**accudiag.exe**) when AccuMap starts up. Within it resides information required by AccuMap to determine what modules and domains it is able to access and how many concurrent users are allowed to run. As seen in Picture H, the license file also includes:

- Company Name.....*Name of the company the license was created for*
- Comment..... *Generally used to differentiate multiple licenses for the same company*
- Expiry.....*Date the license will expire*
- Last Used.....*Time stamp of when the last user in the company launched AccuMap*
- Serial Num.....*Authenticates AccuMap with the AccuMap License Manager Service*
- Application Num.....*Indicates the network the license was created for; Microsoft Windows=0*
- Number of Uses.....*Total number of times AccuMap has been launched by users*
- Semaphores enabled....*Specifies whether AccuMap requires the License Manager Service in order to start or access modules*
- Semaphore Type.....*Specifies the semaphore (i.e. set of permits) the License Manager Service utilizes; always SAS (Semaphores AccuMap Style)*
- SAS Host..... *Tells AccuMap where to look for the AccuMap License Manager Service*
- SAS Port..... *Port the AccuMap License Manager Service uses to talk with AccuMap*
- Version Number.....*Of license; increases as new modules or domains are added to AccuMap*
- Created.....*Date the license was created*
- Release.....*Minimum release of AccuMap required for specified license version*
- Licenser.....*Person who created the license file*

Picture H (A portion of the contents of an AccuMap License File)

```
Included are the license files from our AccuMap setup.
(License file: 0:/Parallel_Install_IPLIHSIPL/shared/sssk.dat)

Licensing file Information
-----

- Company Name:      IHS
- Comment:          calnas03
- Expiry:           Thu Oct 15 2009 (2009-10-15)
- Last Used:        Tue Apr 28 2009 (2009-04-28)
- Serial Num:       1757194901 (0x68BCA&95)
- Application Num:   0
- Number of Uses:   56695
- Semaphores enabled: Yes
- Semaphore Type:   SAS
- SAS Host:         10.40.20.16
- SAS Port:         2104
- Version Number:   28
- Created:          Fri Apr 24 2009 (2009-04-24)
- Release:          Vol. 19 No. 03 [Fri Mar 13 2009] (2009-04-24)
- Licenser:        Jim (2)

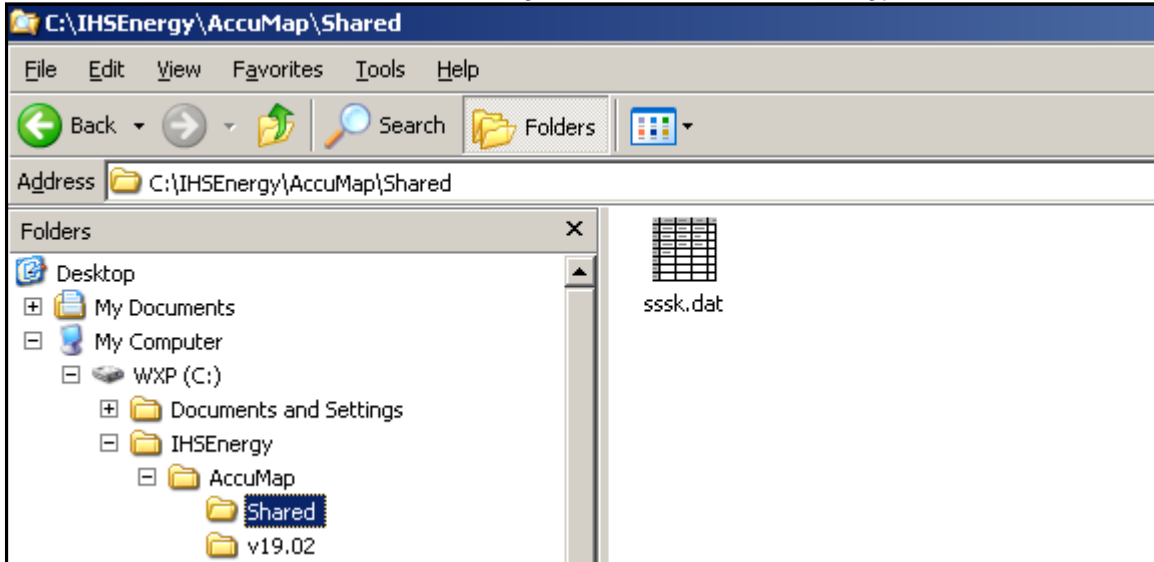
Modules              Domains
                    ALTA  BC  SASK  MAN  EU  TX  TERR  YT  ONT  MT  ND  WY  TEST
-----
Base                 30  20  20   10   0   0   10   0   0   10  10  10   0
Tops                 30  20  20   10   0   0   10   0   0   10  10  10   0
-
-
-
```

NOTE: The license file is both a .DAT file and binary-based so it cannot be viewed in a text editor such as Microsoft Notepad. Its contents can instead be seen through AccuMap via **Tools → E-mail License Files to IHS Support** and reading the body of the message.

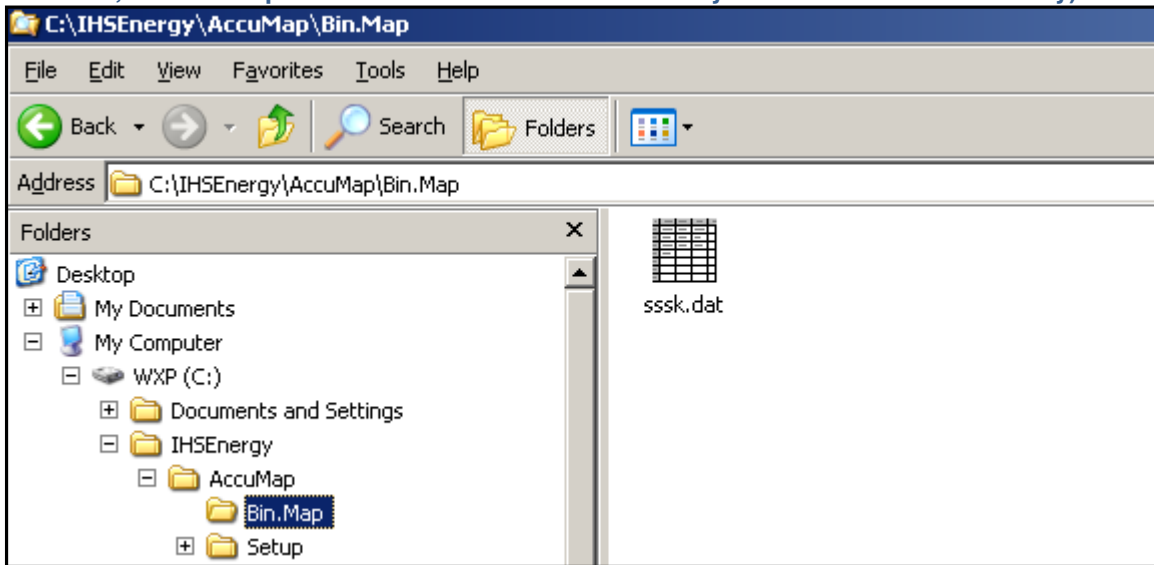
The AccuMap License Manager Service & AccuMap License File

The license file must reside in one of two places for AccuMap to locate it. In a parallel set-up, it should reside in the **Shared** folder (Picture I). In a stand-alone set-up it should reside in the **Bin.Map** folder (Picture J). The AccuMap License File is not “installed” as is the AccuMap License Manager Service; rather, upon its receipt, it is simply saved to the correct location.

Picture I (sssk.dat located in the Shared folder in a parallel installation of the software; the Shared folder contains other files but they are omitted here for clarity)



Picture J (sssk.dat located in the Bin.Map folder in a stand-alone installation of the software; the Bin.Map folder contains other files but they are omitted here for clarity)



If the license file is missing from its correct location, if it's named differently (i.e. sssk.dat.dat or ssk.dat), or if the Windows user account launching AccuMap does not have R/W privileges to the file, AccuMap will not start.

NOTE: Licensing for specific areas of AccuMap's Air Photos layer and DST (Drill Stem Test) Viewer is granted via the Valtus Ortho-Rectified Photographs License File (*orthoarea.lic*) and Canadian Hydrodynamics Dataset License File (*chdarea.lic*). These files must have the same set of permissions and reside in the same directory as the *sssk.dat* file.

PART 2 – INSTALLATION

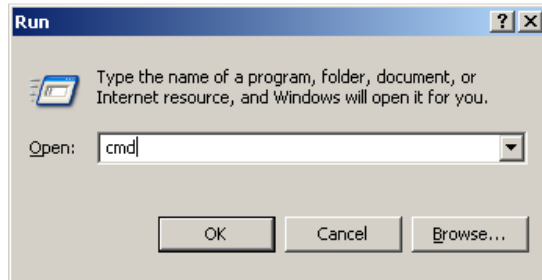
SECTION A – ACCESSING THE INSTALLATION DIRECTORY

Launching the Windows command prompt

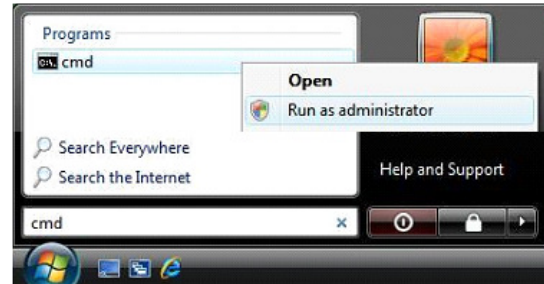
NOTE: To install the AccuMap License Manager Service in Windows 2000 or XP, the user account must belong to the Administrators Group. For help in determining your user account type, see **Appendix, Page i**. In Windows Vista, if not logged in under the hidden Administrator account, users must install the service with elevated privileges or it will display the message **“OpenSCManager() failed. Error code 5”**, see **Appendix, Page iii**.

Service installation takes place in the SasPack directory accessed via the Windows command prompt. In Windows 2000 or XP, from the **Start** menu choose **“Run...”** type: *cmd* and click **“OK”** (Picture A). Windows Vista users click **Start**, type: *cmd* in the search box, right click on the cmd icon it finds and choose **“Run as administrator”** (Picture B). Windows Vista users logged in under the hidden Administrator account can simply left click on the cmd program.

Picture A

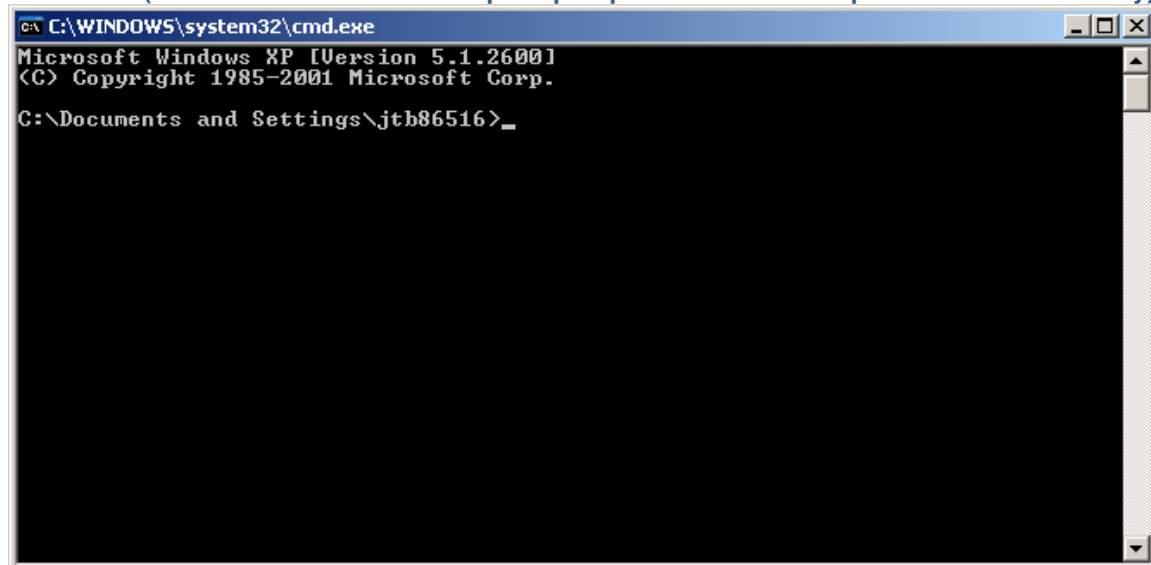


Picture B



The Windows command prompt will open up in the user profile home directory; the exact path will vary according to your operating system. In Windows XP, the user profile home directory is **C:\Documents and Settings\username**, where *username* is the name you use to login to your Windows account. In Picture C the username is jtb86516.

Picture C (The Windows command prompt opens in the user profile home directory)

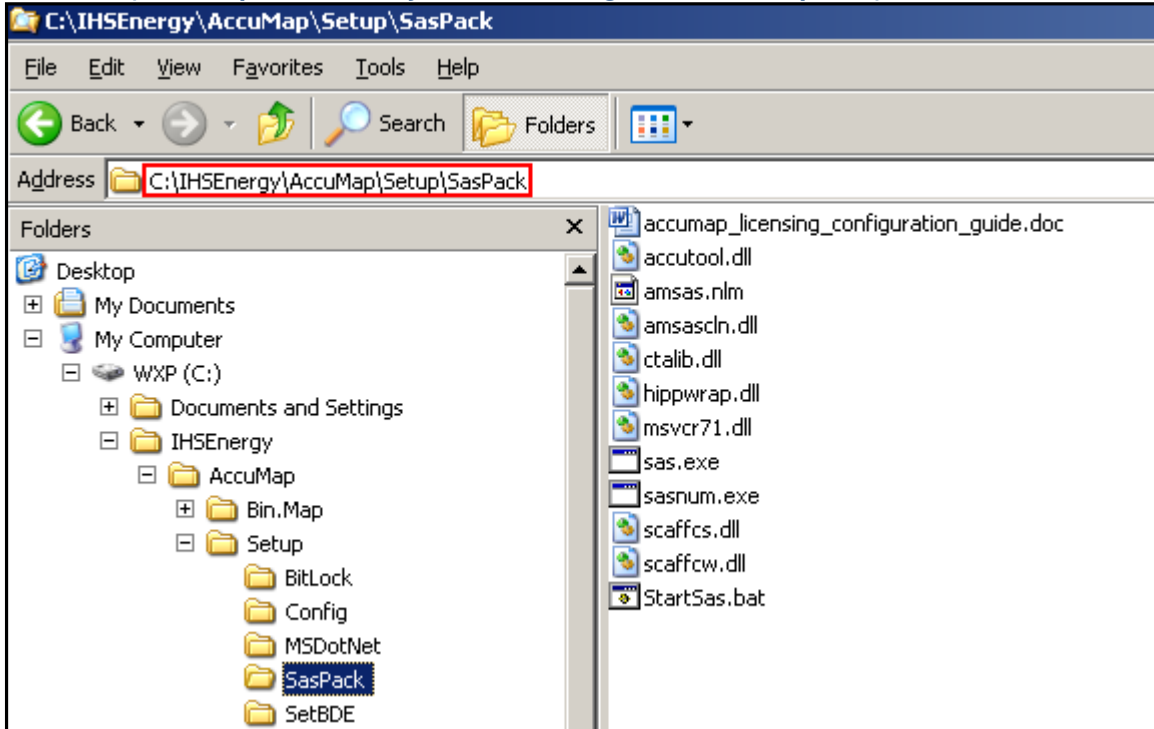


Navigating to the SasPack directory

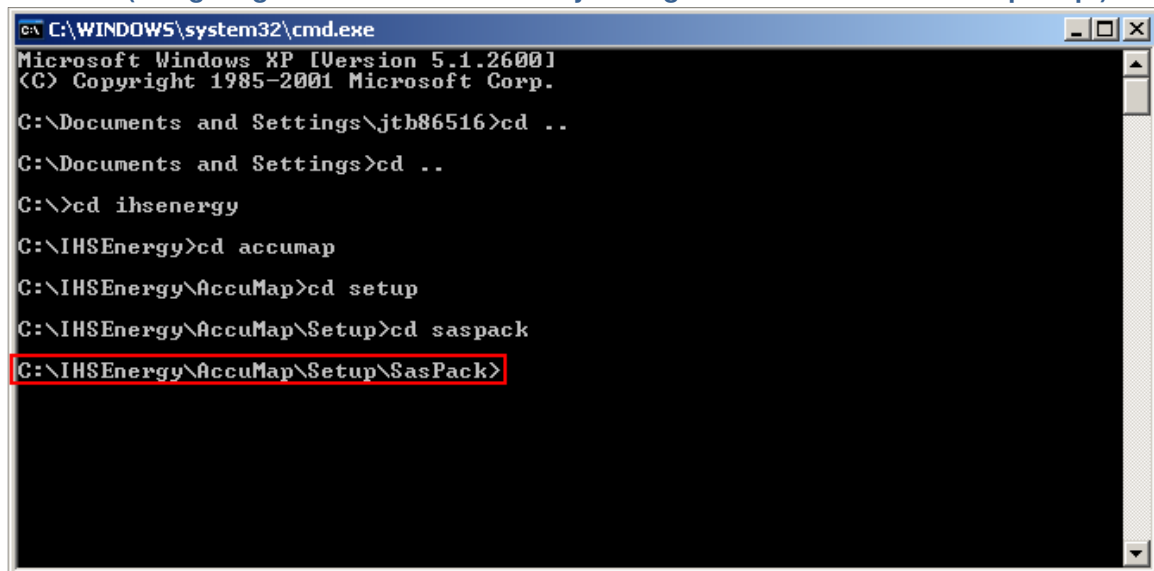
Navigation through the Windows command prompt is done through user input commands. Type: `cd ..` and press < **ENTER** > to go back a directory or type: `cd directoryname` and press < **ENTER** > to go forward a directory. To change drives (i.e. from C to D) type: `d:` and press < **ENTER** >.

For example, a stand-alone installation of AccuMap places the SasPack directory in **C:\IHSEnergy\AccuMap\Setup\SasPack** (Picture D). So, from the user profile home directory of **C:\Documents and Settings\username**, navigation would be as indicated in Picture E.

Picture D (The Saspack directory as seen through Windows Explorer)



Picture E (navigating to the SasPack directory through the Windows command prompt)



SECTION B – RUNNING THE INSTALLATION COMMANDS

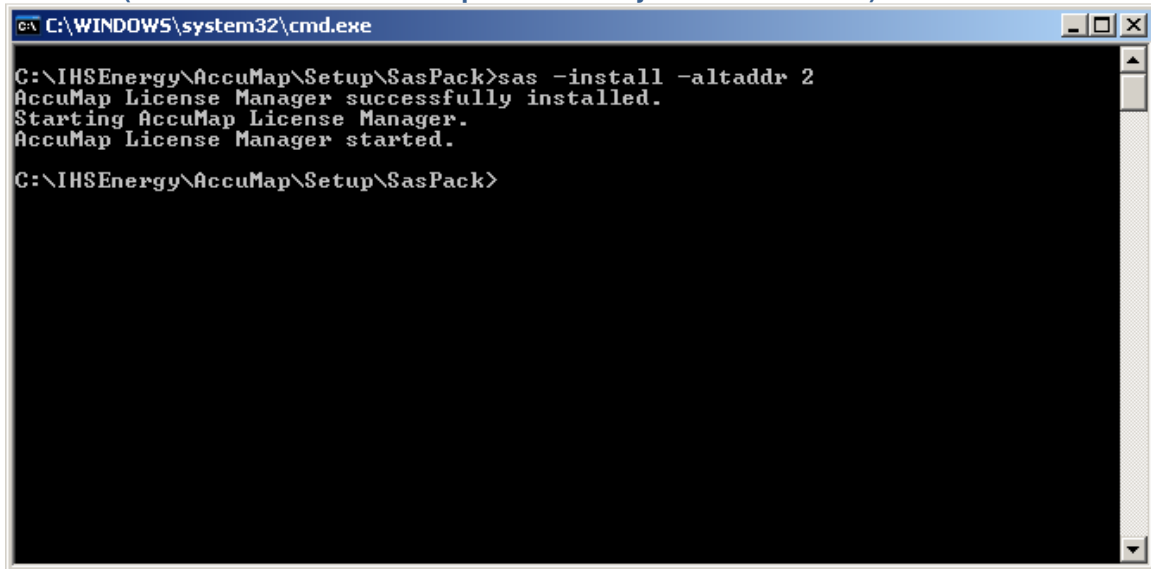
Running sas.exe to install and start the service

If your computer's IP address is dynamic follow **OPTION 1**. If it's static follow **OPTION 2**.

TIP: Your System Administrator or ISP will know whether your IP address is dynamic or static.

OPTION 1 (dynamic IP address): type: `sas -install -altaddr 2` and press < **ENTER** > (Picture F).

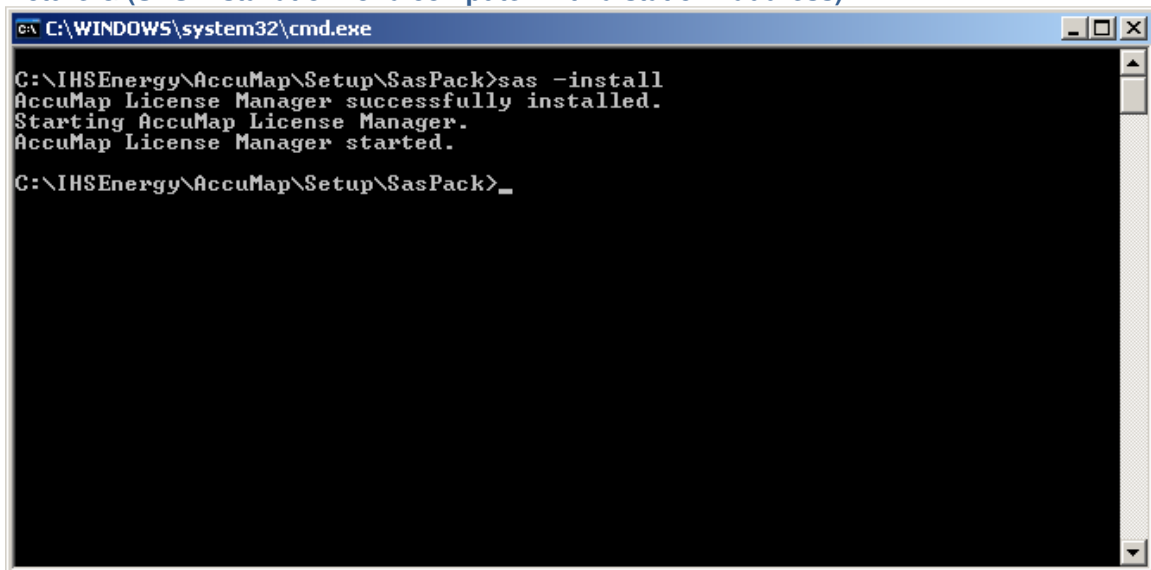
Picture F (SAS installation for a computer with a dynamic IP address)



```
C:\WINDOWS\system32\cmd.exe
C:\IHSEnergy\AccuMap\Setup\SasPack>sas -install -altaddr 2
AccuMap License Manager successfully installed.
Starting AccuMap License Manager.
AccuMap License Manager started.
C:\IHSEnergy\AccuMap\Setup\SasPack>
```

OPTION 2 (static IP address): type: `sas -install` and press < **ENTER** > (Picture G).

Picture G (SAS installation for a computer with a static IP address)



```
C:\WINDOWS\system32\cmd.exe
C:\IHSEnergy\AccuMap\Setup\SasPack>sas -install
AccuMap License Manager successfully installed.
Starting AccuMap License Manager.
AccuMap License Manager started.
C:\IHSEnergy\AccuMap\Setup\SasPack>_
```

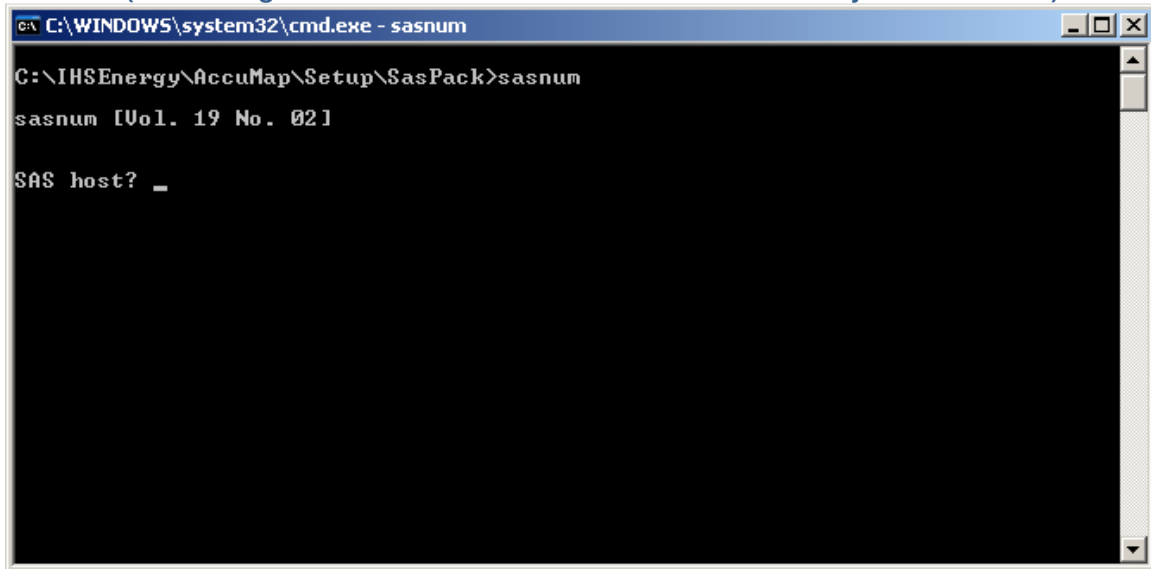
It should read, “**Accumap License Manager successfully installed...**” followed by “**Starting AccuMap License Manager**” and “**AccuMap License Manager started.**”

Running sasnum.exe to generate a serial number

After the AccuMap License Manager Service is installed and started you will need to generate a serial number to be used in the creation of your AccuMap License File. Serial numbers are generated by running **sasnum.exe**.

While in the SasPack directory, type: *sasnum* and press < **ENTER** >. It will then ask for SAS host (Picture H).

Picture H (Generating a serial number to be used in the creation of your license file)



```
C:\WINDOWS\system32\cmd.exe - sasnum
C:\IHSEnergy\AccuMap\Setup\SasPack>sasnum
sasnum [Uo1. 19 No. 02]
SAS host? _
```

If your computer's IP address is dynamic follow **OPTION 1**. If it's static follow **OPTION 2**.

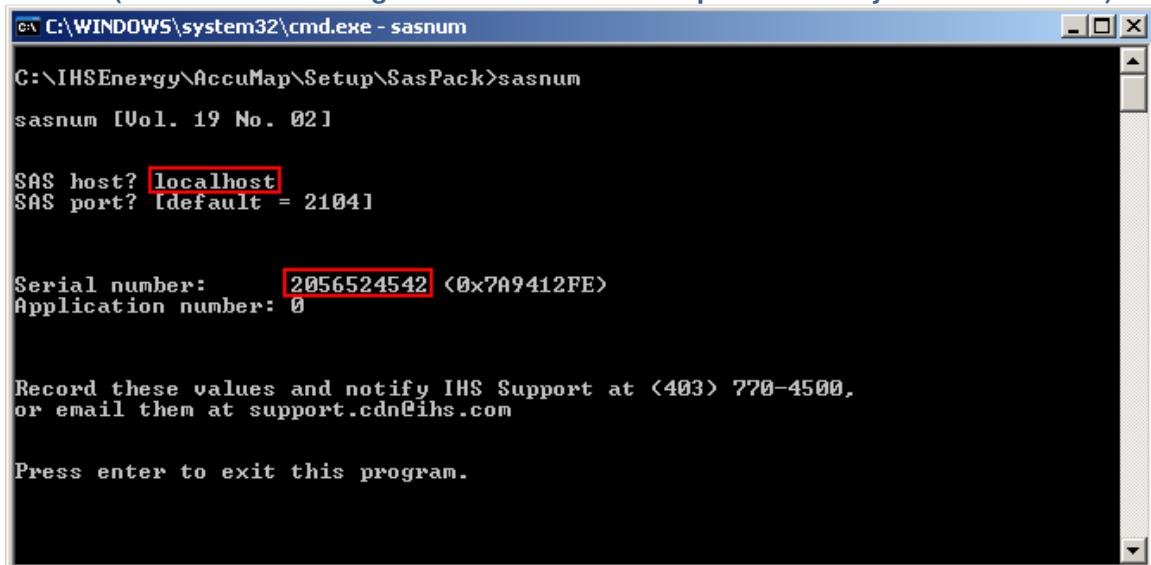
OPTION 1 (For a dynamic IP address)

For SAS host, type: *localhost* and press < **ENTER** >

For SAS port [default = 2104] press < **ENTER** >

It will now generate a serial number (Picture I)

Picture I (SAS host & resulting serial number for a computer with a dynamic IP address)



```
C:\WINDOWS\system32\cmd.exe - sasnum
C:\IHSEnergy\AccuMap\Setup\SasPack>sasnum
sasnum [Uo1. 19 No. 02]
SAS host? localhost
SAS port? [default = 2104]
Serial number: 2056524542 (0x7A9412FE)
Application number: 0
Record these values and notify IHS Support at (403) 770-4500,
or email them at support.cdn@ihs.com
Press enter to exit this program.
```

OPTION 2 (For a static IP address)

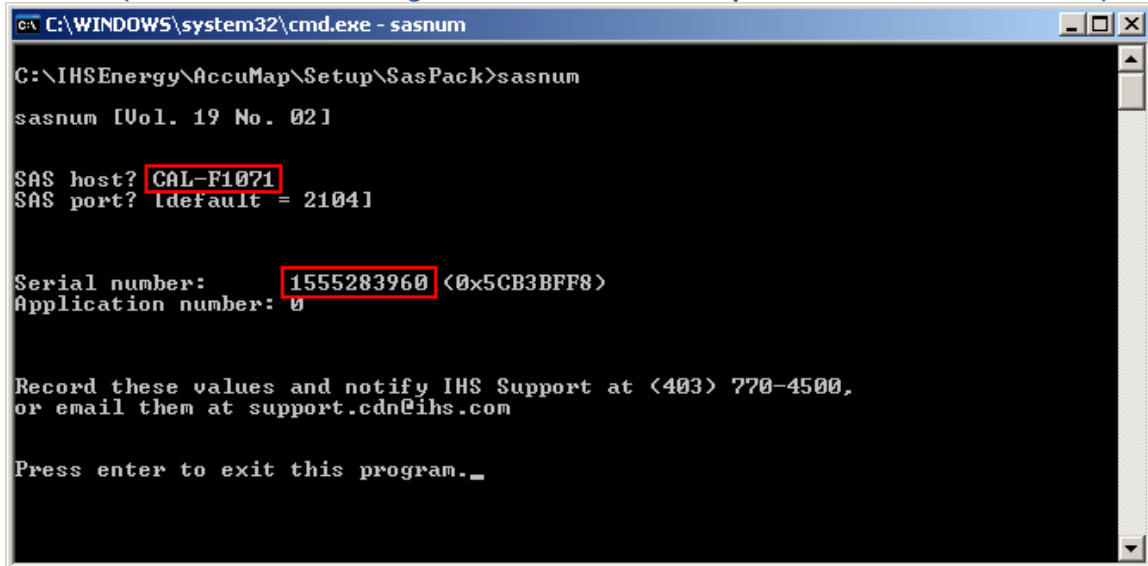
For SAS host, type: **computername** and press < **ENTER** > where, *computername* is the name of your computer.

For SAS port [default = 2104] press < **ENTER** >

It will now generate a serial number (Picture J)

NOTE: For help in determining the name of your computer, see **Appendix, Page ii**.

Picture J (SAS host and resulting serial number for a computer with a static IP address)



```
C:\WINDOWS\system32\cmd.exe - sasnum
C:\IHSEnergy\AccuMap\Setup\SasPack>sasnum
sasnum [Vol. 19 No. 02]

SAS host? CAL-F1071
SAS port? default = 2104

Serial number: 1555283960 <0x5CB3BFF8>
Application number: 0

Record these values and notify IHS Support at (403) 770-4500,
or email them at support.cdn@ihs.com

Press enter to exit this program._
```

E-mail the SAS host you used along with the serial number generated to either the IHS representative you were working with or to support.cdn@ihs.com quoting your ticket number, if applicable.

This information will be used to generate a valid AccuMap License File which will be e-mailed to you shortly from the IHS Energy Licensing Department. Refer to **PART 1 – INTRODUCTION, The AccuMap License File, Page 6** for instructions on where to save your license file.

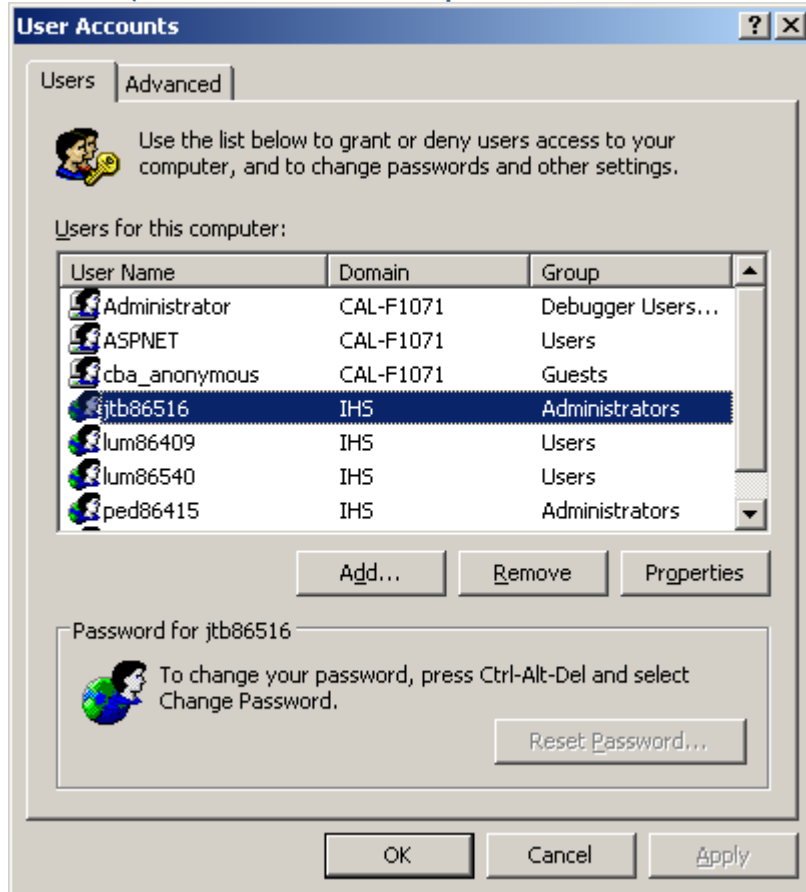
Close out of the Windows command prompt as you would any other Windows application.

APPENDIX

Determining your Windows User Account type

To see if your user account is part of the Administrators Group, from the **Start** menu point to **“Settings”** and choose **“Control Panel”**. Select **“User Accounts”** and locate your user name. If you cannot open **“User Accounts”** without a password then you are not part of the Administrators Group. In Picture A below, the user name jtb86516 is part of the Administrators Group. Administrators can change the Group Membership of any account by highlighting the account, clicking **“Properties”** and then selecting the level of access.

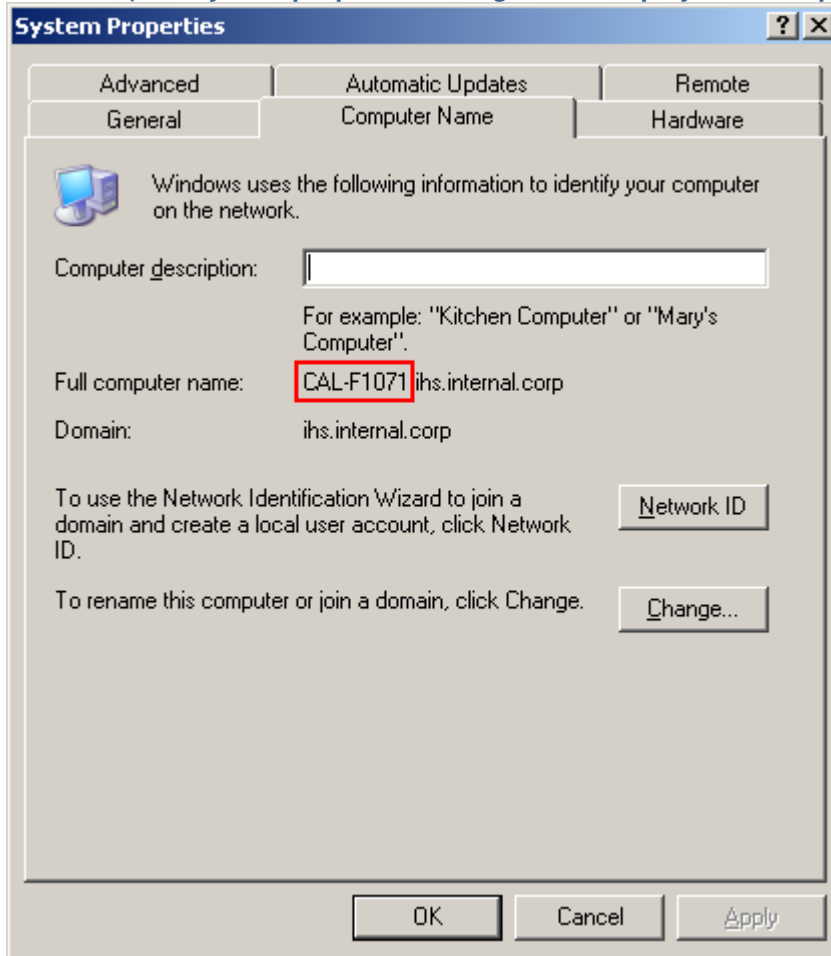
Picture A (The selected account is part of the Administrators Group)



Determining your Windows computer name

To find the name of your computer, right click on the “**My Computer**” icon on your desktop and choose “**Properties**” from the popup menu. From the **System Properties** dialogue box select the **Computer name** tab to display full computer name (Picture B). It is not necessary to include the trailing domain (if existing) in the entry for the SAS host. For example, the full computer name may read *CAL-F1071.ihs.internal.corp* but only *CAL-F1071* need be entered for the SAS host.

Picture B (The System properties dialogue box displays the computer name)

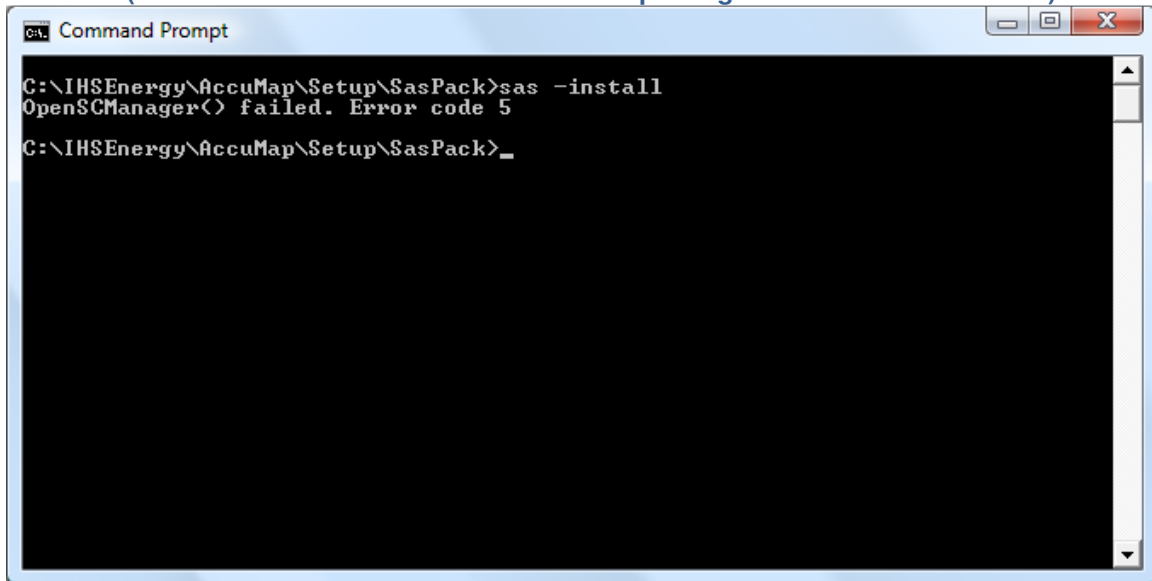


SAS installation returns “OpenSCManager() failed, Error code 5”

Windows Vista has added a new security feature in the form of User Account Control (UAC). This extra layer of protection commonly appears in the form of a “**Windows needs your permission to continue**” dialogue box that pops up when users, including those who belong to the Administrators Group, install programs or make changes that are administrative in nature.

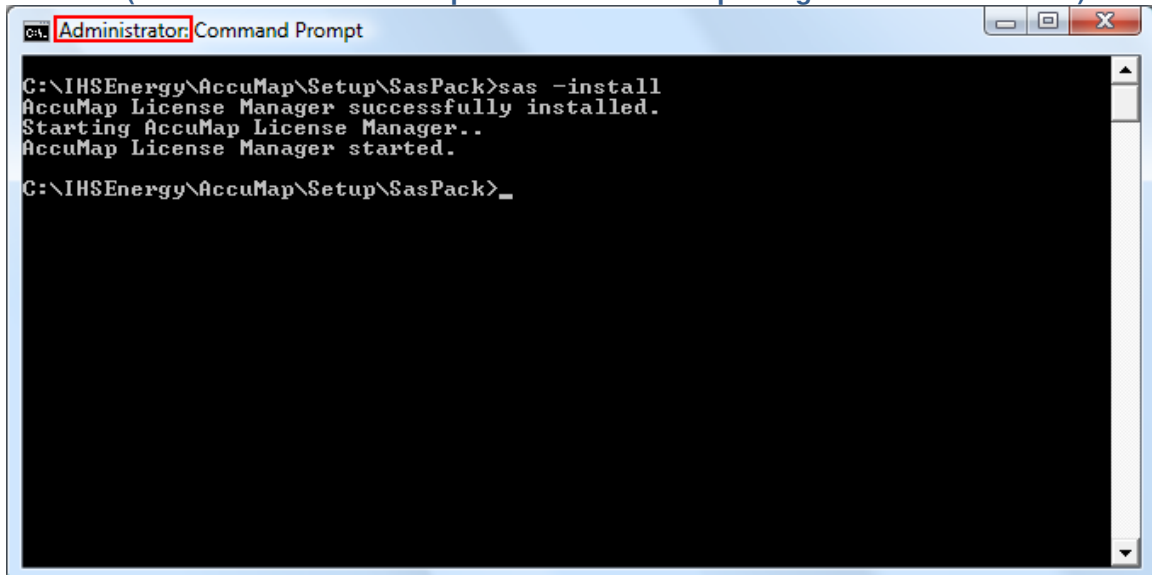
While newer programs or programs updated for Windows Vista will display the UAC dialogue box, prompting users to click “**Continue**” or “**Cancel**” before installation can continue, older programs or programs not updated for Windows Vista may not. **Sas.exe**, the program which installs the AccuMap License Manager Service, for example, will not display the UAC dialogue box but will instead display the message “**OpenSCManager() failed. Error code 5**” (Picture C). Running **sas.exe** under the hidden Administrator account or running the Windows command prompt as an administrator is a way to avoid this issue (Picture D).

Picture C (SAS installation will fail if user account privileges are not administrative)



```
ca. Command Prompt
C:\IHSEnergy\AccuMap\Setup\SasPack>sas -install
OpenSCManager() failed. Error code 5
C:\IHSEnergy\AccuMap\Setup\SasPack>_
```

Picture D (SAS installation will complete if user account privileges are administrative)



```
ca. Administrator: Command Prompt
C:\IHSEnergy\AccuMap\Setup\SasPack>sas -install
AccuMap License Manager successfully installed.
Starting AccuMap License Manager..
AccuMap License Manager started.
C:\IHSEnergy\AccuMap\Setup\SasPack>_
```